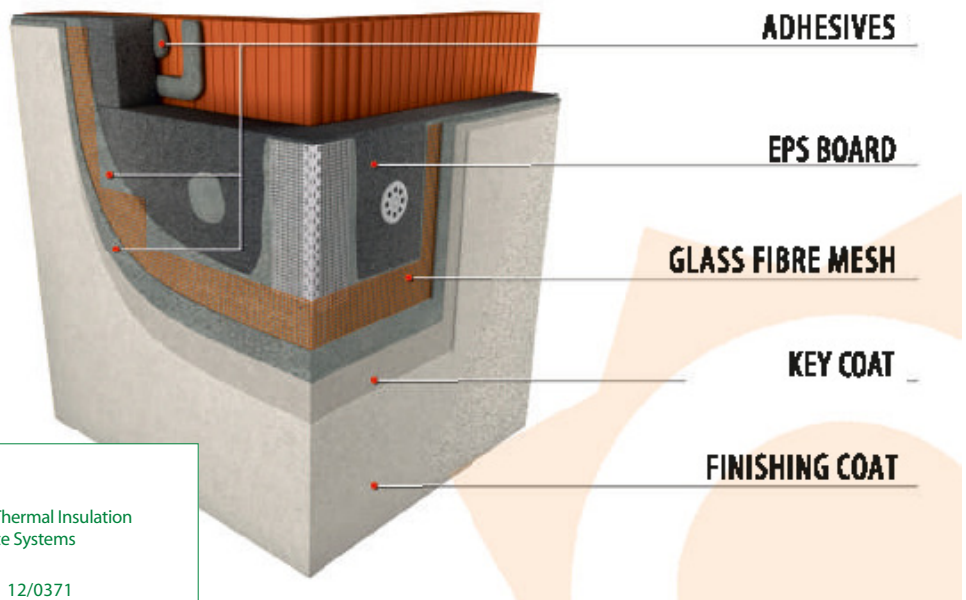




## SOLTHERM™ External Insulation System Components

Insulation Boards .....	2
System Components .....	3
Beads and Trim.....	4
Accessories.....	7



## Insulation boards



**Product Name:** White Polystyrene Insulation Board  
**Product Code:** EPS70 White

Insulation board with low inflammability, smooth edged, for wall and ceiling insulation.

**Thermal conductivity ( $\lambda$ ):** 0.038 W/(mK)  
**Dimensions:** 500 x 1000 mm  
**Thickness:** 10-400 mm



**Product Name:** Platinum Polystyrene Insulation Board  
**Product Code:** EPS70 Platinum

Special insulation board with low inflammability, smooth edged, for wall and ceiling insulation with excellent thermal features.

**Thermal conductivity ( $\lambda$ ):** 0.031 W/(mK)  
**Dimensions:** 500 x 1000 mm  
**Thickness:** 10-400 mm



**Product Name:** Perimeter Polystyrene Insulation Board  
**Product Code:** EPS200

Ultra high density board with lower water vapour properties to be used below the plinth areas.

**Thermal conductivity ( $\lambda$ ):** 0.033 W/(mK)  
**Dimensions:** 600 x 1200 mm  
**Thickness:** 10-400 mm



**Product Name:** Mineral Wool Insulation Board  
**Product Code:** 3522

Non combustible mineral wool insulation board for wall and ceiling insulation.

**Thermal conductivity ( $\lambda$ ):** 0.035 W/(mK)  
**Dimensions:** 625 x 800 mm  
**Thickness:** 40, 50, 60, 80, 100, 120, 140, 160, 180, 200 [mm]



**Product Name:** Mineral Wool Lamella Firebreak  
**Product Code:** 3611

Non combustible mineral wool lamella fire break board.

**Thermal conductivity ( $\lambda$ ):** 0.041 W/(mK)  
**Dimensions:** 200 x 1200 mm  
**Thickness:** 40, 50, 60, 80, 100, 120, 140, 160, 180, 200 [mm]



# System Components



**Product Name:** SOLTHERM™ SA Adhesive  
**Product Code:** SO-BASE-SA/25

SOLTHERM™ SA Adhesive is used for installation of EPS insulation boards to the wall in Soltherm External Insulation System.

**Unit Size:** 25 kg bag  
**Coverage:** approx. 5 m<sup>2</sup> (at 5 mm thickness)



**Product Name:** SOLTHERM™ UB Basecoat  
**Product Code:** SO-BASE-UB/25

SOLTHERM™ UB Exterior Basecoat is used for basecoating and embedding fibre mesh in Soltherm External Insulation System.

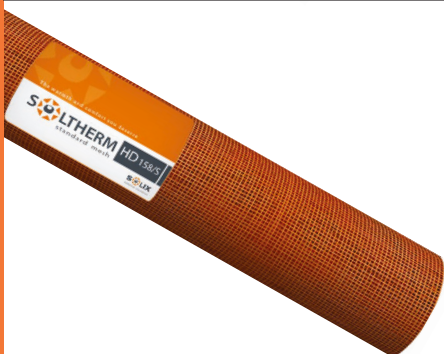
**Unit Size:** 25 kg bag  
**Coverage:** approx. 5 m<sup>2</sup> (at 5 mm thickness)



**Product Name:** SOLTHERM™ BC-P Quick Basecoat  
**Product Code:** SO-BASE-BC/25

SOLTHERM™ BC-P Quick Pre-primed Exterior Basecoat is used for basecoating and embedding fibre mesh in Soltherm External Insulation System. There is no additional priming required before render application when using this basecoat.

**Unit Size:** 25 kg bag  
**Coverage:** approx. 5 m<sup>2</sup> (at 5 mm thickness)



**Product Name:** SOLTHERM™ Reinforcing Mesh  
**Product Code:** SO-MESH-158/50

Standard glass fibre reinforcing mesh for surface reinforcement in Soltherm External Insulation System.

**Unit size:** 1m wide x 50m long roll  
**Density:** 158 g/m<sup>2</sup>  
**Coverage:** approx. 45m<sup>2</sup>



**Product Name:** SOLTHERM™ Silicon-Silicate Render 1.5mm  
**Product Code:** SO-RENDER-AFP15/B30/25

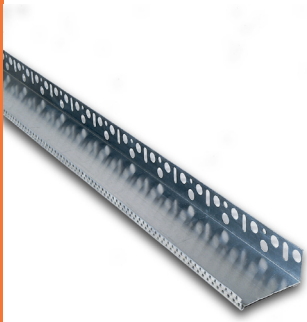
SOLTHERM™ Silicone-Silicate Render is used as a render finish in Soltherm External Insulation System. Note: Relevant primer to be applied before render application.

Available in range of SOLTHERM™ colours.

**Unit Size:** 25 kg pail  
**Coverage:** approx. 9 m<sup>2</sup> (1.5mm grain)



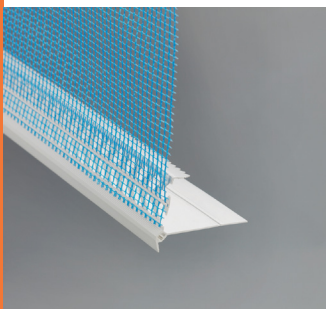
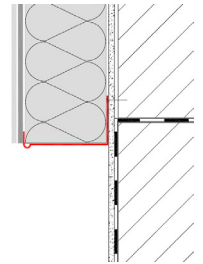
## Beads & trims



**Product Name:** Aluminium Starter Track  
**Product Code:** Depending on depth

Aluminium starter track for ETICS Systems.

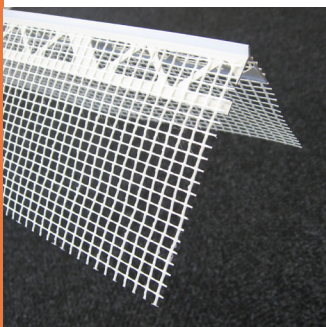
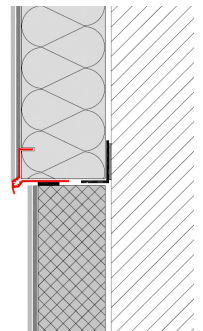
**Lengths available:** 2.5 m  
**Depths available:** 30-160mm (10 mm increments)  
adjustable 180-300mm



**Product Name:** PVC Plinth Bead  
**Product Code:** 3815

PVC Plinth Bead to create thermal bridge free plinth detail.

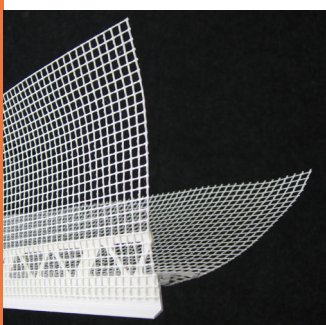
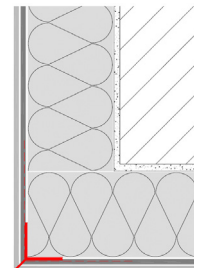
**Lengths available:** 2.0 m



**Product Name:** PVC Corner Bead  
**Product Code:** 7020

PVC Corner Bead for finishing 90° corners.

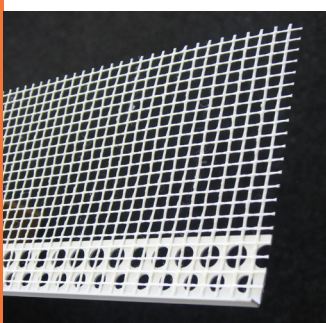
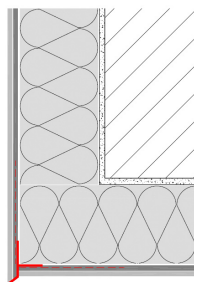
**Lengths available:** 2.5 m



**Product Name:** PVC Drip Bead  
**Product Code:** 6490

PVC Drip Bead to create a drip over window and door head reveals.

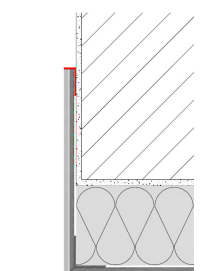
**Lengths available:** 2.5 m



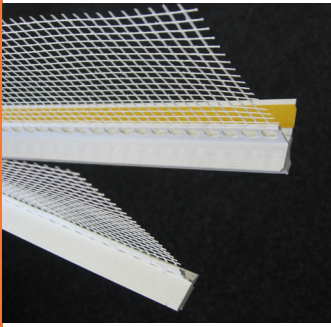
**Product Name:** PVC Render Stop Bead  
**Product Code:** 6410

PVC Render Stop Bead for a clear line render finish.

**Lengths available:** 2.5 m



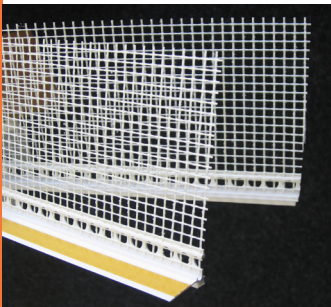
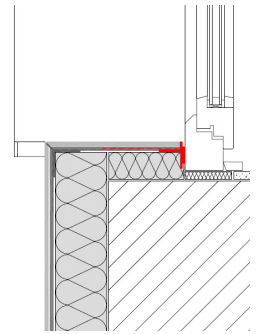
## Beads & trims



**Product Name:** PVC Window Protection Bead  
**Product Code:** 6436

PVC Window Protection Bead to create a seal between the ETICS System and window or door frame.

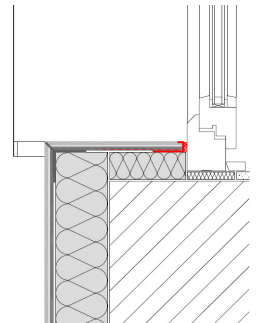
**Lengths available:** 2.5 m



**Product Name:** PVC Narrow Window Protection Bead  
**Product Code:** 6470

PVC Window Protection Bead to create a seal against window or door frame.

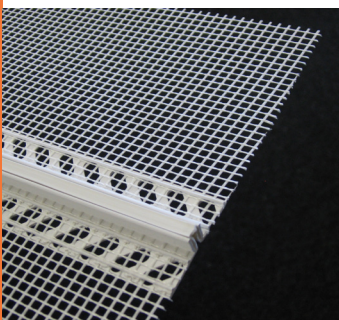
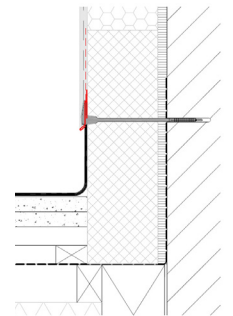
**Lengths available:** 2.5 m



**Product Name:** PVC Metal Flashing Starter Bead  
**Product Code:** 3809

PVC Metal Flashing Starter Bead for fitting metal or lead flashing over the stepped roofs, porch roofs, bay windows, etc.

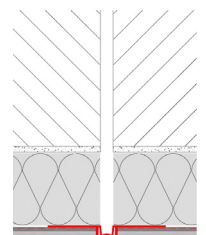
**Lengths available:** 2.0 m



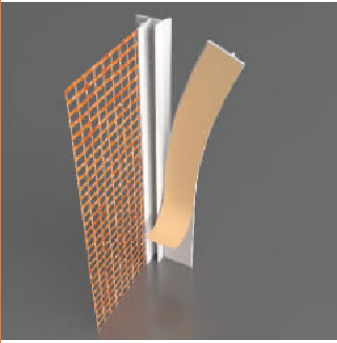
**Product Name:** PVC Joint Bead  
**Product Code:** 3006

PVC Joint Bead for creating controlled render breaks.

**Lengths available:** 2.0 m



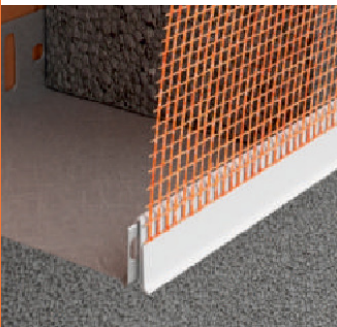
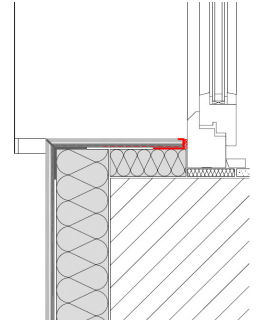
# SOLTHERM Beads & trims



**Product Name:** PVC Window Frame Bead  
**Product Code:** SO-BEAD-FRAME-6

PVC window frame protection bead.

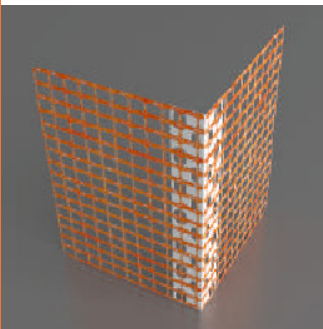
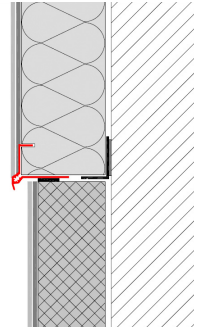
**Lengths available:** 2.6 m



**Product Name:** Clip-On Render Stop Bead  
**Product Code:** SO-BEAD-ST-DRIP

PVC render Stop Bead to clip onto aluminium starter track.

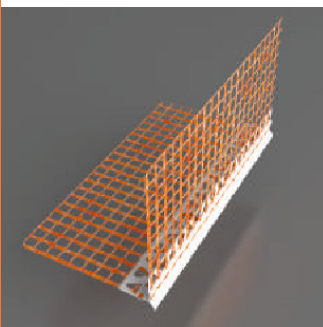
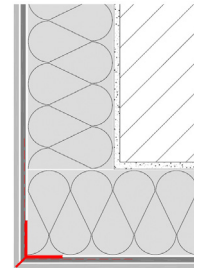
**Lengths available:** 2.0 m



**Product Name:** PVC Corner Bead  
**Product Code:** SO-BEAD-CORNER/N

PVC Corner Bead for finishing 90° corners. No lip.

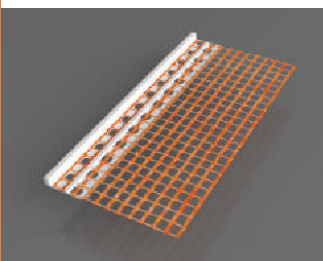
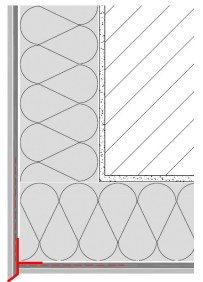
**Lengths available:** 2.5 m



**Product Name:** PVC Drip Bead  
**Product Code:** SO-BEAD-DRIP

PVC Drip Bead to create a drip over window and door head reveals.

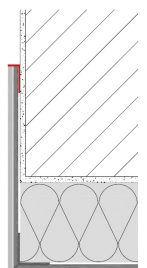
**Lengths available:** 2.5 m



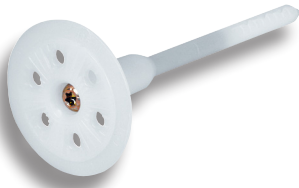
**Product Name:** PVC Render Stop Bead  
**Product Code:** SO-BEAD-STOP-6

PVC Render Stop Bead for a clear line render finish.

**Lengths available:** 2.0 m



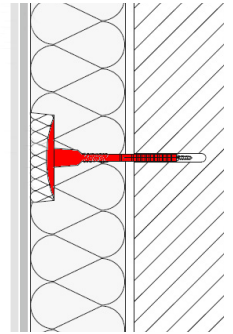
# Accessories



**Product Name:** Mushroom fixings  
**Product Code:** MFXXX (XXX - length in mm)

Low thermal conductivity mechanical mushroom fixings for ETICS Systems.

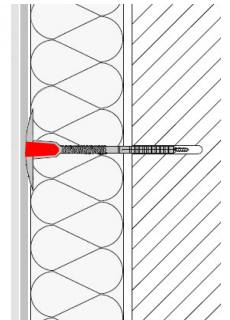
**Lengths available:** 100-400 mm (20mm increments)



**Product Name:** EPS Plugs for Mushroom Fixings  
**Product Code:** STR-plug

EPS Plugs for covering the screw head for STR-U fixings in surface installation.

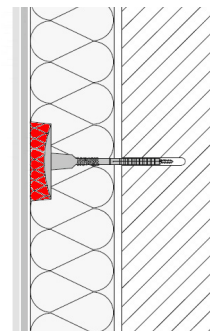
**Pack size:** 500 no.



**Product Name:** Caps for Mushroom Fixings  
**Product Code:** STR-cap

EPS or MW Caps for covering the fixing's head for countersunk installation.

**Pack size:** 100 no.



**Product Name:** Sealing Tape  
**Product Code:** 3799

Sealing tape for sealing the joints to other substrates.

**Lengths available:** 12 m  
**Thickness:** 15 mm  
**Expansion range:** 3-9 mm

Different thicknesses and expansion ranges available on request



**Product Name:** PVC Plinth Bead Connectors Set  
**Product Code:** 36783815

Pins and corners for easy and clean connection of PVC Plinth Bead.

**Set content:** 10 corners + 25 pins





**Product Name:** Light Weight Objects Installation Dowel  
**Product Code:** 3699

PVC Light Weight Installation Dowel to install light objects up to 5kg per installation point.

**Pack size:** 10 no.



**Product Name:** Medium Weight Objects Installation Packer  
**Product Code:** 3844

EPS Installation Packer for fitting medium weight objects up to 15kg per packer.

**Depths available:** 60-300mm (20mm increments).



**Product Name:** Heavy Weight Objects Installation Packer  
**Product Code:** 3847

Composite Installation Packer for fitting heavy weight objects .

**Depths available:** 60-300mm (20mm increments).



**Product Name:** Clear Silicone  
**Product Code:** Silicone

Solvent free Clear Silicone for sealing the joints at the window frames, flashings, etc.

**Container size:** 310ml

