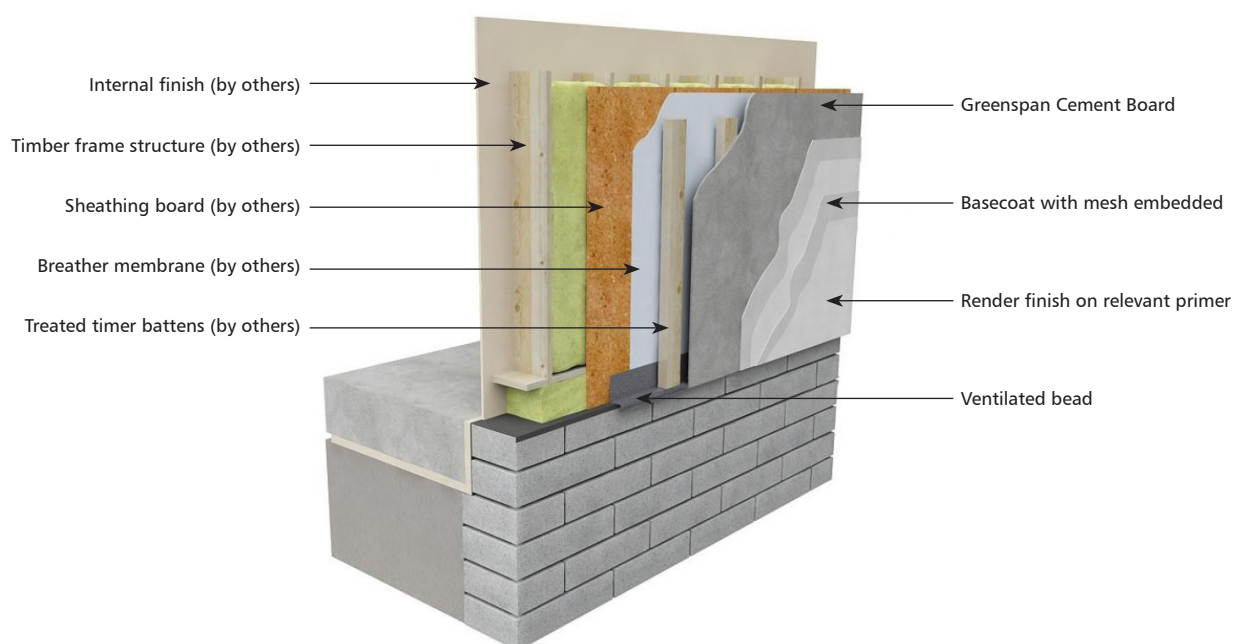


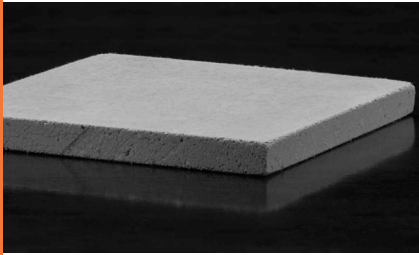


Greenspan Greenclad™ Cement Board Render System Components

Main System Components.....	2
Beads and Trim.....	3
Accessories	6



Main System Components



Product Name: Greenspan Cement Board
Product Code: BOARD-241212

High strength cement board to be used in external elevation systems and internal applications.

Dimensions: 2400x1200 mm
Thickness: 12 mm



Product Name: AQUAPANEL® Stainless Steel Screws
Product Code: AQ-SCREWS-SN40

AQUAPANEL® Stainless Steel Screws for fixing the board onto timber substructures.

Q-ty per box: 250 pieces
Coverage: approx. 11 m²



Product Name: AQUAPANEL® Exterior Joint Tape
Product Code: AQ-JOINTMESH-50

AQUAPANEL® Exterior Joint Tape is used to reinforce joint in exterior areas. It is embedded in AQUAPANEL® Joint Filler Grey.

Unit size: 100mm wide x 50m long
Coverage: approx. 25 m²



Product Name: AQUAPANEL® Joint Filler Grey
Product Code: AQ-JOINTFILLER-20

AQUAPANEL® Joint Filler Grey is a cement-bound filling material for setting AQUAPANEL® Exterior Joint Tape.

Unit Size: 20 kg bag
Coverage: approx. 35 m²



Product Name: Greenspan Reinforcing Mesh
Product Code: MESH-160

Greenspan Reinforcing Mesh is a wide-meshed glass fabric designed to reinforce the basecoat exterior/interior finish systems.

Unit Size: 1m wide x 50m long
Coverage: approx. 45 m²



Product Name: SOLTHERM™ UB Basecoat
Product Code: SO-BASE-UB/25

SOLTHERM™ UB Exterior Basecoat is used for basecoating in Cement Board Systems.

Unit Size: 25 kg bag
Coverage: approx. 5 m² (at 5 mm thickness)



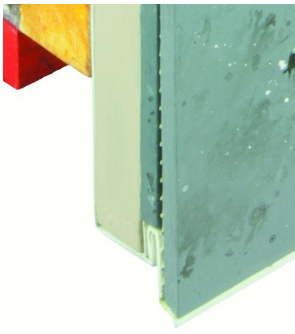
Product Name: SOLTHERM™ Silicon-Silicate Render 1.5mm
Product Code: SO-RENDER-AFP15/B30/25

SOLTHERM™ Silicone-Silicate Render is used as a render finish in Cement Board Systems. Note: Relevant primer to be applied before render application.

Unit Size: 25 kg pail
Coverage: approx. 9 m² (1.5mm grain)



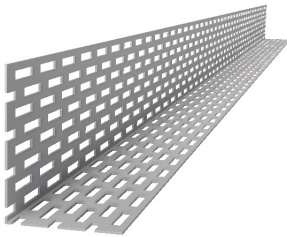
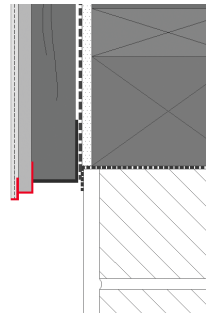
Beads & trims



Product Name: Plinth profile
Product Code: 6010+6011

PVC beads set with a drip to protect the bottom edge of Exterior Cement Boards

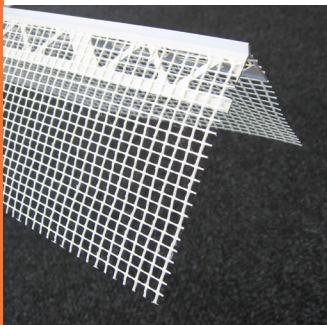
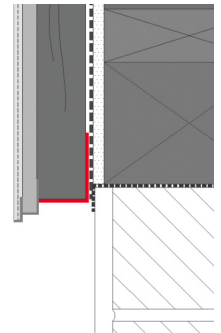
Lengths available: 2.0 m (6010) & 2.5 m (6011)



Product Name: Ventilated Angle Bead
Product Code: 9301

Aluminium perforated bead used for bottom ventilation of the Exterior Cement Board Systems

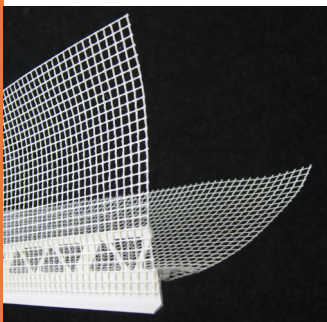
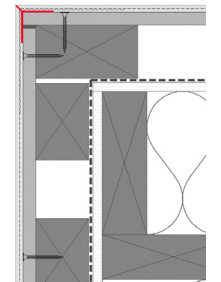
Lengths available: 2.0 m



Product Name: PVC Corner Bead
Product Code: 7020

PVC Corner Bead for finishing 90° corners.

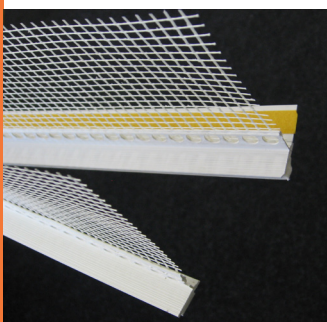
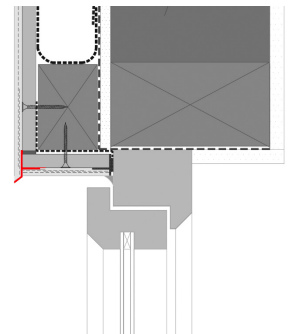
Lengths available: 2.5 m



Product Name: PVC Drip Bead
Product Code: 6485

PVC Drip Bead to create a drip over window and door head reveals.

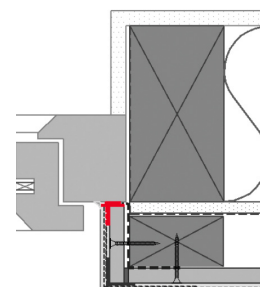
Lengths available: 2.5 m



Product Name: PVC Window Protection Bead
Product Code: 6436

PVC Window Protection Bead to create a seal between the System and window or door frame.

Lengths available: 2.5 m



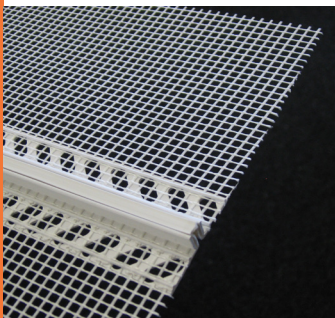
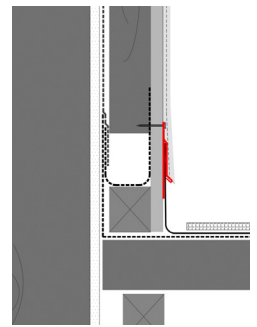
Beads & trims



Product Name: PVC Flashing Starter Bead
Product Code: LX-45

PVC Bead used for connection between render system and metal flashing.

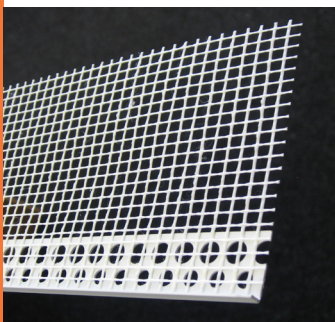
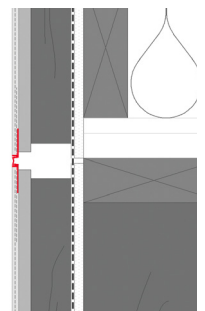
Lengths available: 2.0 m



Product Name: PVC Movement Joint Bead
Product Code: 6101

PVC Movement Joint Bead to form vertical and horizontal movement joints and also controlled render breaks.

Lengths available: 2.0 m



Product Name: PVC Render Stop Bead
Product Code: 6410

PVC Render Stop Bead for a clear line render finish.

Lengths available: 2.5 m



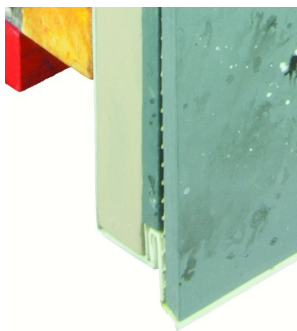
Product Name: PVC Horizontal Movement Joint Bead
Product Code: 6010+6013+6014

PVC beads set to form a horizontal movement joint in Exterior Cement Board Systems

Lengths available: 2.0 m (6010), 2.5 m (6013) & 2.5m (6014)



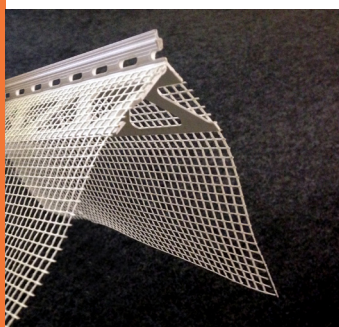
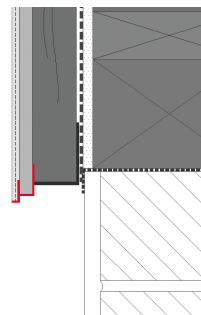
Beads & trims for 12mm render applications



Product Name: Plinth profile for 12mm render
Product Code: 6010+4651

PVC beads set with a drip to protect the bottom edge of Exterior Cement Boards in 12mm render applications.

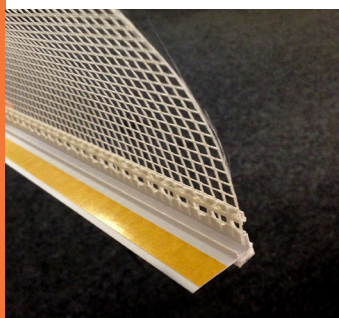
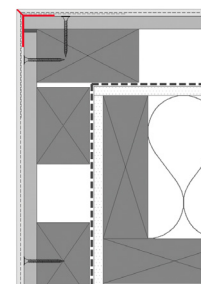
Lengths available: 2.0 m (6010) & 2.5 m (4651)



Product Name: PVC Corner Bead for 12mm render
Product Code: 3304

PVC Corner Bead for finishing 90° corners in 12mm render applications.

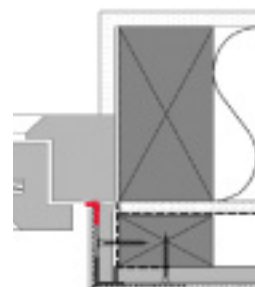
Lengths available: 2.5 m



Product Name: PVC Window Protection Bead for 12mm render
Product Code: 6460

PVC Window Protection Bead to create a seal between the System and window or door frame in 12mm render applications.

Lengths available: 2.5 m



Accessories

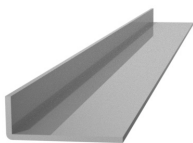
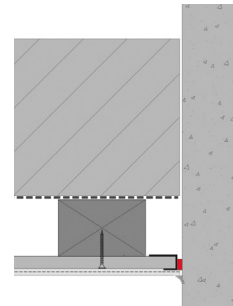


Product Name: Sealing Tape
Product Code: SEAL-8/15

Sealing tape for sealing the joints to other substrates.

Lengths available: 8 m
Thickness: 15 mm
Expansion range: 3-9 mm

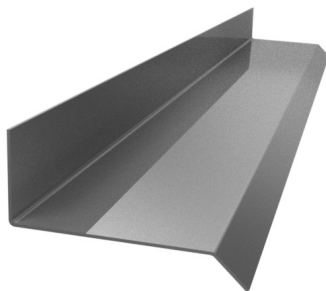
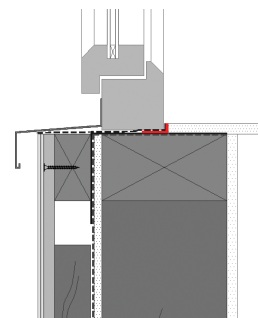
Different thicknesses and expansion ranges available on request



Product Name: Window Angle Bead
Product Code: ALU-ANGLE

Aluminium L-bead to create an upstand around the window base in Exterior Cement Board Systems.

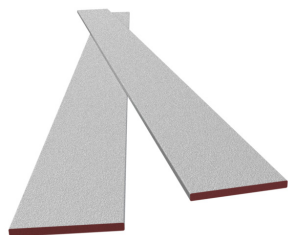
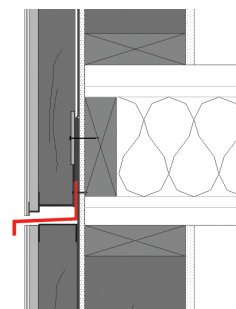
Lengths available: 2.4 m



Product Name: Stainless steel firestop bead
Product Code: ALU-FIRESTOP

Stainless steel bead to create a firestop detail in multi-storey constructions in Exterior Cement Board Systems.

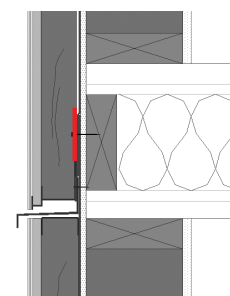
Lengths available: 2.5 m



Product Name: Intumescent Firestop
Product Code: ASTROFLAME-75

The fire rated cladding seal will maintain the ventilated cavity in normal conditions, leaving a continuous free air space, but in the event of a fire, the intumescent ventilated fire barrier will quickly expand to seal off the cavity to prevent the spread of fire.

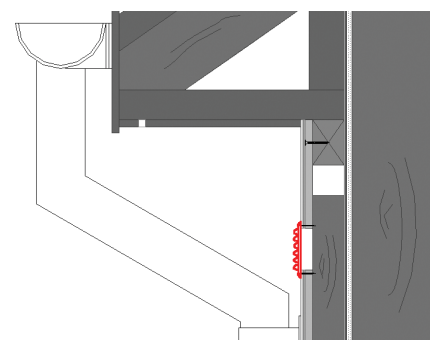
Lengths available: 1 m



Product Name: Ventilation Grid
Product Code: VENT-100

PVC grid to allow for system ventilation at soffit area in Exterior Cement Board Systems.

Size available: Ø100 mm



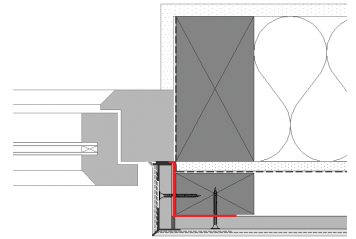
Accessories



Product Name: Flashing Tape
Product Code: WYGLUV-100

The high-performance self-adhesive tape for permanent windtight sealing at window and door abutments.

Lengths available: 25 m
Width: 100 mm



Product Name: Clear Silicone
Product Code: SILICONE

Solvent free Clear Silicone for sealing the joints at the window frames, flashings, etc.

Container size: 310ml

