

AQUAPANEL® Cement Board

System Components

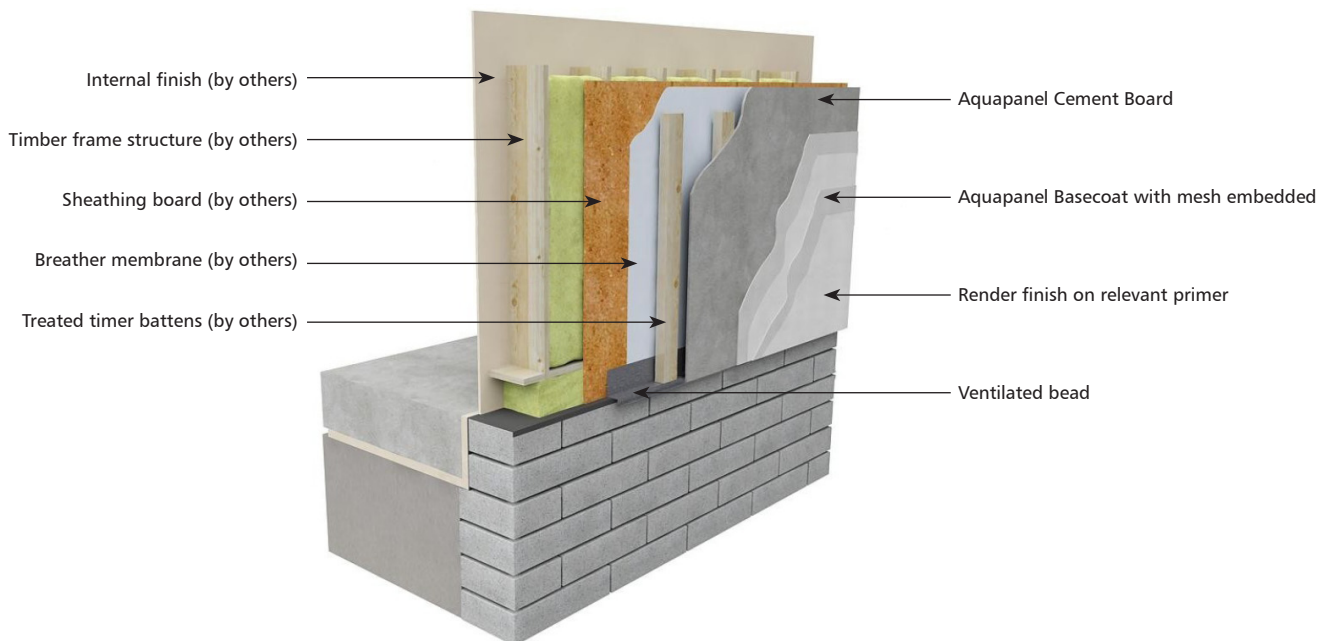


Main System Components..... 3

Finishing Coats..... 4

Beads and Trim..... 5

Accessories..... 8



Main System Components



Product Name: AQUAPANEL® Cement Board Outdoor
Product Code: AQ-BOARD-240912

Cement board with a Portland cement and aggregate core, with coated glass fibre mesh embedded in back and front surfaces. Ends are square cut and edges are reinforced and finished smoothly (the EasyEdge).

Dimensions: 900 x 2400 mm
Thickness: 12.5 mm



Product Name: AQUAPANEL® Stainless Steel Screws
Product Code: AQ-SCREWS-SN40

AQUAPANEL® Stainless Steel Screws have been specially developed for fixing AQUAPANEL® Cement Board Outdoor onto metal and timber substructures.

Q-ty per box: 250 pieces
Coverage: approx. 11 m²



Product Name: AQUAPANEL® Exterior Joint Tape
Product Code: AQ-JOINTMESH-50

AQUAPANEL® Exterior Joint Tape is a glass grid layer fabric with an alkali-resistant coating. AQUAPANEL® Exterior Joint Tape is used to reinforce joint in exterior areas. It is embedded in AQUAPANEL® Joint Filler Grey.

Unit size: 100mm wide x 50m long
Coverage: approx. 25 m²



Product Name: AQUAPANEL® Joint Filler Grey
Product Code: AQ-JOINTFILLER-20

AQUAPANEL® Joint Filler Grey is a cement-bound filling material for setting AQUAPANEL® Exterior Joint Tape.

Unit Size: 20 kg bag
Coverage: approx. 50 m²



Product Name: AQUAPANEL® Reinforcing Mesh
Product Code: AQ-MESH-160/B

AQUAPANEL® Reinforcing Mesh is a wide-meshed glass fabric designed to reinforce the basecoat matrix in exterior/interior finish systems.

Unit Size: 1m wide x 50m long
Coverage: approx. 50 m²



Product Name: AQUAPANEL® Exterior Basecoat White
Product Code: AQ-BASE-25

AQUAPANEL® Exterior Basecoat White, a portland cement mortar containing dry latex polymers. AQUAPANEL® Exterior Basecoat White is used for basecoating AQUAPANEL® Cement Board Outdoor.

Unit Size: 25 kg bag
Coverage: approx. 4 m² (at 5 mm thickness)



Finishing Coats



Product Name: AQUAPANEL® Exterior Primer
Product Code: AQ-PRIMER-15

AQUAPANEL® Exterior Primer is a ready to use synthetic dispersion with high alkali resistance for use over basecoated substrates where AQUAPANEL® exterior finishes are used.

Unit size: 15kg pail
Coverage: approx 80 m²



Product Name: AQUAPANEL® Exterior Dispersion Plaster
Product Code: AQ-RENDER-D/25

AQUAPANEL® Exterior Dispersion Plaster is weather resistant, flexible and accommodates thermal expansion and contraction without delamination under normal conditions.

Unit size: 25kg pail
Coverage: approx. 8 m²



Product Name: AQUAPANEL® Exterior Silicone Resin Plaster
Product Code: AQ-RENDER-S/25

AQUAPANEL® Exterior Silicone Resin Plaster allows diffusion and is water-repellent. For application on AQUAPANEL® Exterior Basecoat. The product is flexible and can absorb thermal expansion and contraction.

Unit size: 25kg pail
Coverage: approx. 8 m²



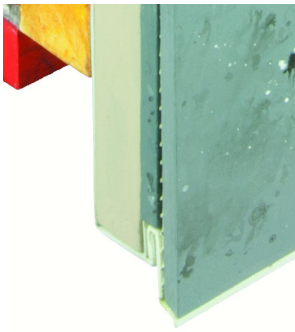
Product Name: AQUAPANEL® Mineral Finish White
Product Code: AQ-RENDER-M/30

AQUAPANEL® Exterior Mineral Finish - white is a mineral finishing plaster with 2mm grain for use on top of AQUAPANEL® Exterior Basecoat for facade applications.

Unit size: 30kg bag
Coverage: approx. 10m²



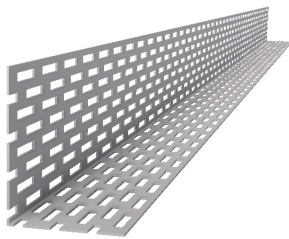
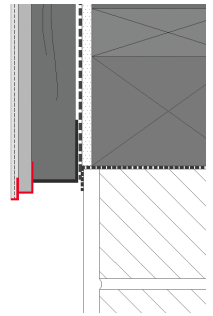
Beads & trims



Product Name: Plinth profile
Product Code: 6010+6011

PVC beads set with a drip to protect the bottom edge of AQUAPANEL® Exterior Cement Board

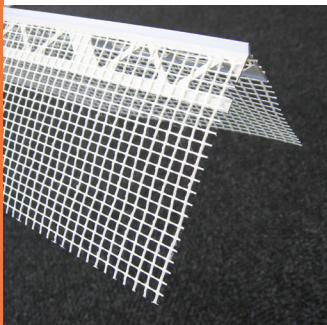
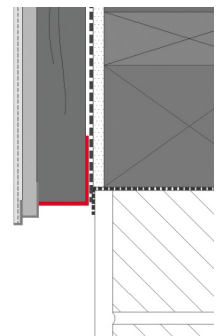
Lengths available: 2.0 m (6010) & 2.5 m (6011)



Product Name: Ventilated Angle Bead
Product Code: 9301

Aluminium perforated bead used for bottom ventilation of the AQUAPANEL® Exterior Cement Board System

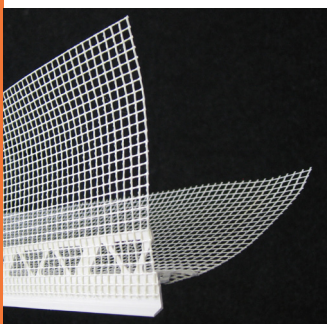
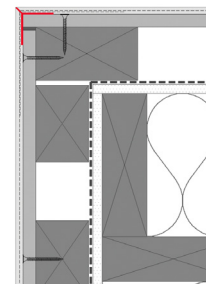
Lengths available: 2.5 m



Product Name: PVC Corner Bead
Product Code: 7020

PVC Corner Bead for finishing 90° corners.

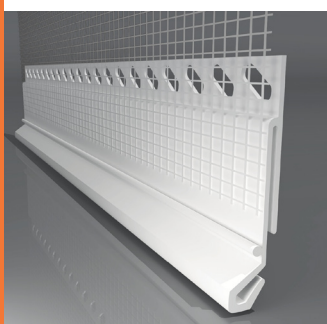
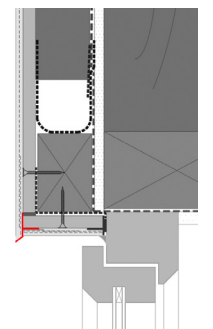
Lengths available: 2.5 m



Product Name: PVC Drip Bead
Product Code: 6485

PVC Drip Bead to create a drip over window and door head reveals.

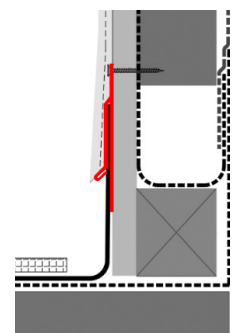
Lengths available: 2.5 m



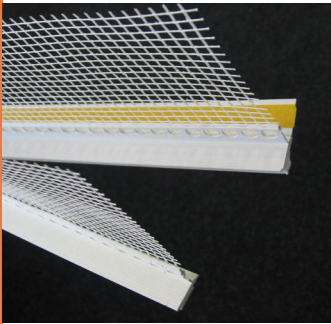
Product Name: PVC Flashing Connector Bead
Product Code: LX-45

PVC Flashing Connector Bead for durable connection between metal flashing and plasters in Aquapanel Cement Board System.

Lengths available: 2.0 m



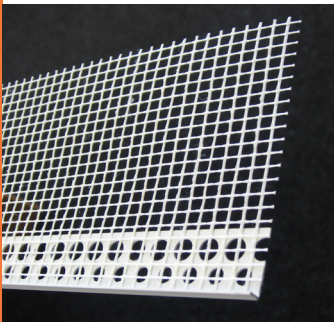
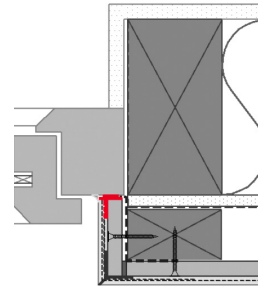
Beads & trims



Product Name: PVC Window Protection Bead
Product Code: 6436

PVC Window Protection Bead to create a seal between the System and window or door frame.

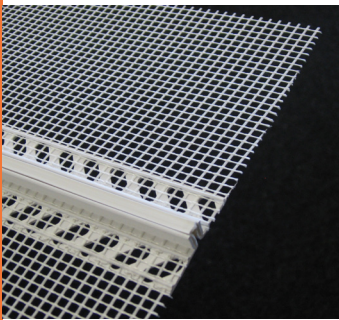
Lengths available: 2.4 m



Product Name: PVC Render Stop Bead
Product Code: 6410

PVC Render Stop Bead for a clear line render finish.

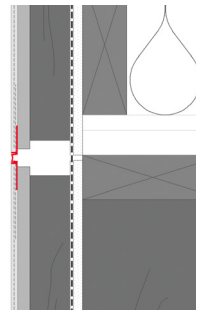
Lengths available: 2.5 m



Product Name: PVC Joint Bead
Product Code: 6101

PVC Joint Bead to form vertical and horizontal movement joints and also controlled render breaks.

Lengths available: 2.0 m



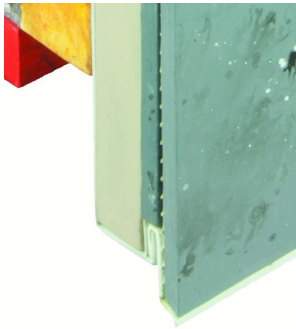
Product Name: PVC Horizontal Movement Joint Bead
Product Code: 6010+6013+6014

PVC beads set to form a horizontal movement joint in AQUAPANEL® Exterior Cement Board System.

Lengths available: 2.0 m (6010), 2.5 m (6013) & 2.5m (6014)



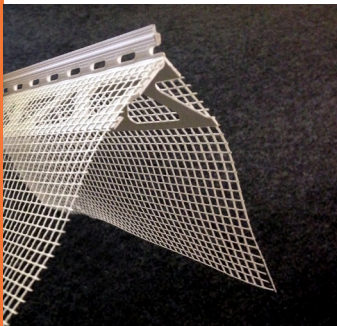
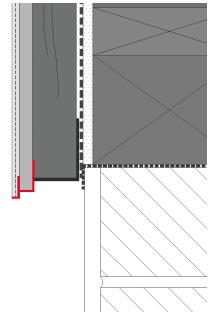
Beads & trims for 12mm render applications



Product Name: Plinth profile for 12mm render
Product Code: 6010+4651

PVC beads set with a drip to protect the bottom edge of AQUAPANEL® Exterior Cement Board in 12mm render applications.

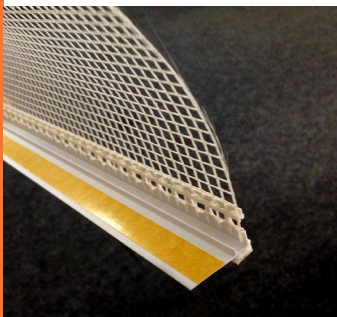
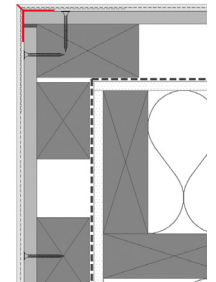
Lengths available: 2.0 m (6010) & 2.5 m (4651)



Product Name: PVC Corner Bead for 12mm render
Product Code: 3304

PVC Corner Bead for finishing 90° corners in 12mm render applications.

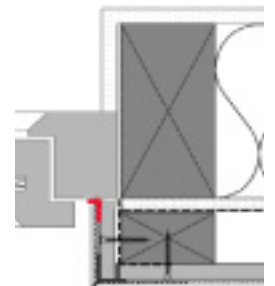
Lengths available: 2.5 m



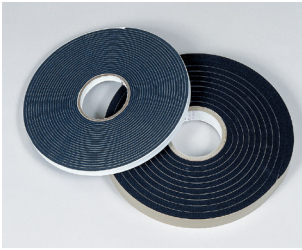
Product Name: PVC Window Protection Bead for 12mm render
Product Code: 6460

PVC Window Protection Bead to create a seal between the System and window or door frame in 12mm render applications.

Lengths available: 2.4 m



Accessories

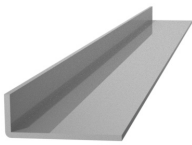
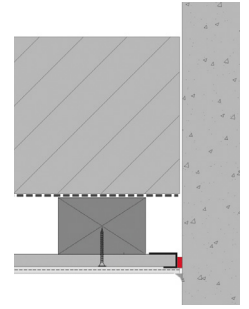


Product Name: Sealing Tape
Product Code: SEAL-8/15

Sealing tape for sealing the joints to other substrates.

Lengths available: 8 m
Thickness: 15 mm
Expansion range: 3-9 mm

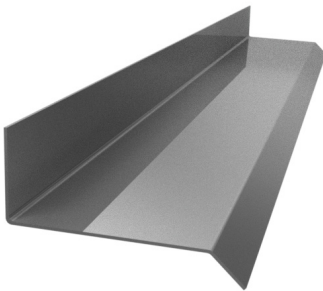
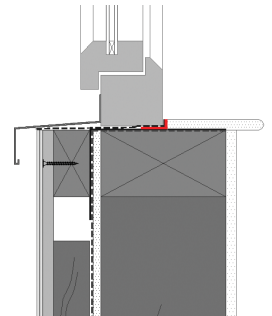
Different thicknesses and expansion ranges available on request



Product Name: Window Angle Bead
Product Code: ALU-ANGLE

Aluminium L-bead to create an upstand around the window base in AQUAPANEL® Exterior Cement Board System.

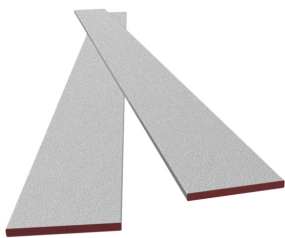
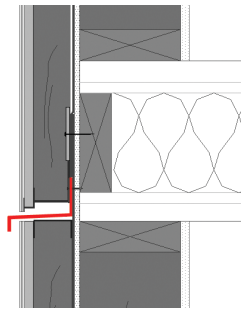
Lengths available: 2.4 m



Product Name: Stainless steel firestop bead
Product Code: SS-FIRESTOP

Stainless steel bead to create a firestop detail in multi-storey constructions in AQUAPANEL® Exterior Cement Board System.

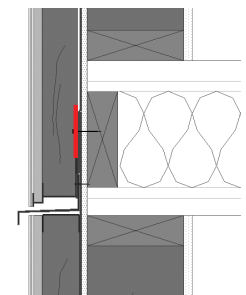
Lengths available: 2.5 m



Product Name: Intumescent Firestop
Product Code: ASTROCLAD-75

The fire rated cladding seal will maintain the ventilated cavity in normal conditions, leaving a continuous free air space, but in the event of a fire, the intumescent ventilated fire barrier will quickly expand to seal off the cavity to prevent the spread of fire.

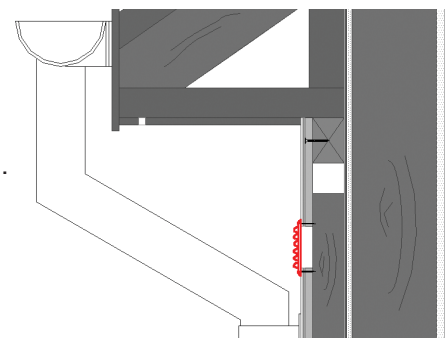
Lengths available: 1 m



Product Name: Ventilation Grid
Product Code: VENT-100

PVC grid to allow for system ventilation at soffit area in AQUAPANEL® Exterior Cement Board System.

Size available: Ø100 mm

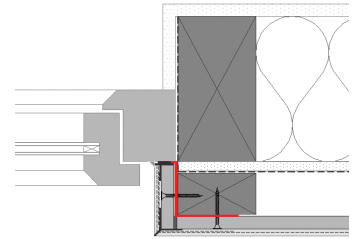




Product Name: Flashing Tape
Product Code: WIGLUV-100

The high-performance self-adhesive tape for permanent windtight sealing at window and door abutments.

Lengths available: 25 m
Width: 100 mm



Product Name: Clear Silicone
Product Code: SILICONE

Solvent free Clear Silicone for sealing the joints at the window frames, flashings, etc.

Container size: 310ml





Ballyhahill
Co. Limerick
V94 Y2C6

Tel: +353 69 82222

Fax: +353 69 82226

E-mail: sales@greenspan.ie

Web: www.greenspan.ie



Birmingham Business Park
1310 Solihull Parkway
Birmingham
B37 7YB

Tel: +44 (0) 121 635 5502

Fax: +44 (0) 121 635 5503

E-mail: sales@greenspan.co.uk

Web: www.greenspan.co.uk



www.greenspan.ie