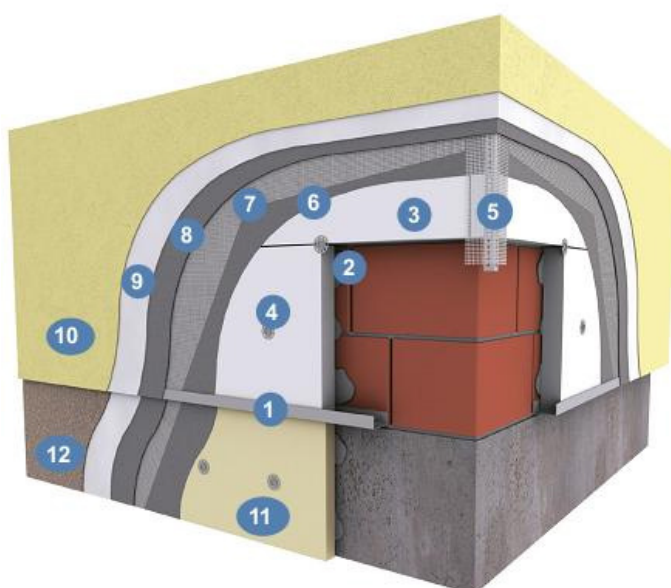




Greenspan Greentherm™ External Insulation System Components

Insulation Boards	2
System Components	3
Beads and Trim.....	4
Accessories.....	7



1. Starter track
2. Adhesive
3. Insulation board
4. Mechanical fixing
5. Corner bead
6. Basecoat
7. Fibre mesh embedded within basecoat
8. Basecoat finished smooth
9. Primer
10. Acrylic or silicone render
11. Perimeter insulation
12. Render finish on BaseTec basecoat

Insulation boards



Product Name: White Polystyrene Insulation Board

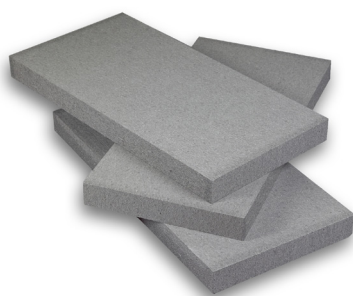
Product Code: EPS70 White

Insulation board with low inflammability, smooth edged, for wall and ceiling insulation.

Thermal conductivity (λ): 0.038 W/(mK)

Dimensions: 500 x 1000 mm

Thickness: 10-400 mm



Product Name: Platinum Polystyrene Insulation Board

Product Code: EPS70 Platinum

Special insulation board with low inflammability, smooth edged, for wall and ceiling insulation with excellent thermal features.

Thermal conductivity (λ): 0.031 W/(mK)

Dimensions: 500 x 1000 mm

Thickness: 10-400 mm



Product Name: Perimeter Polystyrene Insulation Board

Product Code: EPS200

Ultra high density board with lower water vapour properties to be used below the plinth areas.

Thermal conductivity (λ): 0.033 W/(mK)

Dimensions: 600 x 1200 mm

Thickness: 10-400 mm



Product Name: Mineral Wool Insulation Board

Product Code: 3522

Non combustible mineral wool insulation board for wall and ceiling insulation.

Thermal conductivity (λ): 0.035 W/(mK)

Dimensions: 625 x 800 mm

Thickness: 40, 50, 60, 80, 100, 120, 140, 160, 180, 200 [mm]



Product Name: Mineral Wool Lamella Firebreak

Product Code: 3611

Non combustible mineral wool lamella fire break board.

Thermal conductivity (λ): 0.041 W/(mK)

Dimensions: 200 x 1200 mm

Thickness: 40, 50, 60, 80, 100, 120, 140, 160, 180, 200 [mm]



System Components



Product Name: GreenTherm™ Premium Fix Adhesive and Basecoat
Product Code: 0103-01W25

Adhesive and basecoat for ETICS Systems.

Unit size: 25kg bag

Usage: as adhesive - approx. 4-6 kg/m²
as basecoat - approx. 4.5 kg/m²

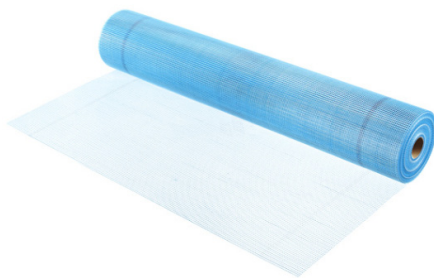


Product Name: BaseTec (A+B) Adhesive and Basecoat
Product Code: 3540+3541

Water proof adhesive and basecoat created especially for plinth and underground areas.

Unit size: 20kg pail+20kg bag

Usage: as adhesive - approx. 2 kg/m²
as basecoat - approx. 1.3 kg/m²



Product Name: Glass Fibre Reinforcing Mesh
Product Code: 0101-160B

Standard glass fibre reinforcing mesh for surface reinforcement in ETICS Systems.

Unit size: 1m wide x 50m long roll

Density: 160 g/m²

Coverage: approx. 45m²



Product Name: GreenTherm™ Primer
Product Code: 0179-P160

GreenTherm™ Primer is used to improve adhesion of the render to basecoat.

Unit size: 16l pail

Coverage: approx. 80m²



Product Name: GreenTherm™ Acrylic and Silicon Render 1.5mm
Product Code: 0171-10A150 (Acrylic); 0171-10S150 (Silicone)

GreenTherm™ Acrylic or Silicone Render is used as a render finishing in Cement Board Systems. Note: Relevant primer to be applied before render application.

Unit Size: 25 kg pail

Coverage: approx. 10 m² (1.5mm grain)



Beads & trims



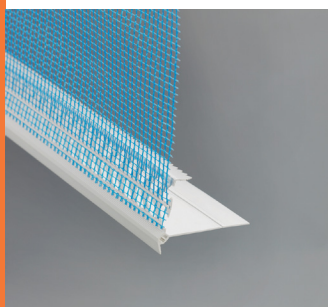
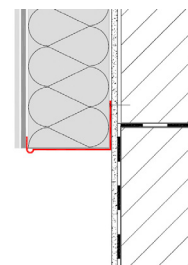
Product Name: Aluminium Starter Track

Product Code: Depending on depth

Aluminium starter track for ETICS Systems.

Lengths available: 2.5 m

Depths available: 30-160mm (10 mm increments)
adjustable 180-300mm

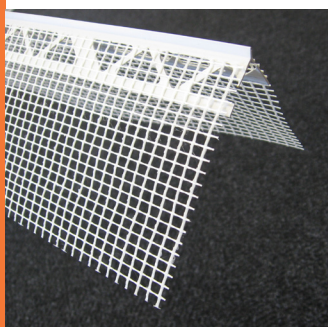
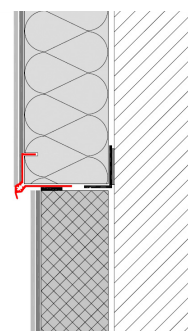


Product Name: PVC Plinth Bead

Product Code: 3815

PVC Plinth Bead to create thermal bridge free plinth detail.

Lengths available: 2.0 m

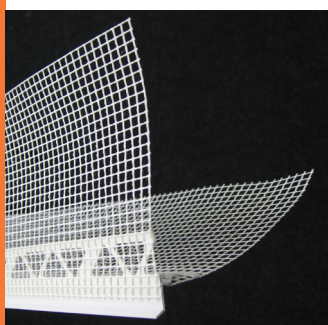
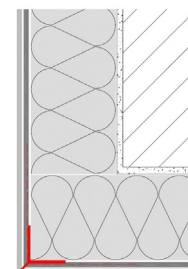


Product Name: PVC Corner Bead

Product Code: 7020

PVC Corner Bead for finishing 90° corners.

Lengths available: 2.5 m

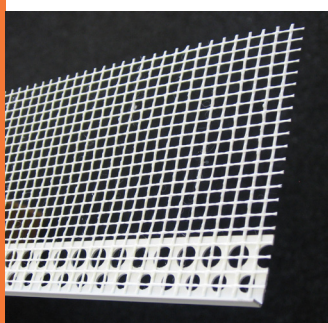
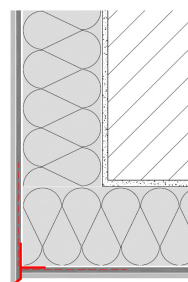


Product Name: PVC Drip Bead

Product Code: 6490

PVC Drip Bead to create a drip over window and door head reveals.

Lengths available: 2.5 m

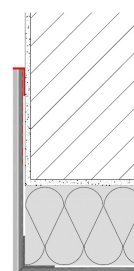


Product Name: PVC Render Stop Bead

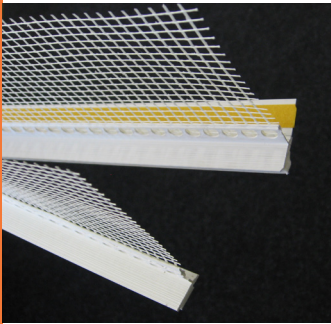
Product Code: 6410

PVC Render Stop Bead for a clear line render finish.

Lengths available: 2.5 m



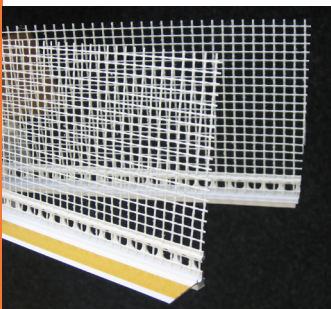
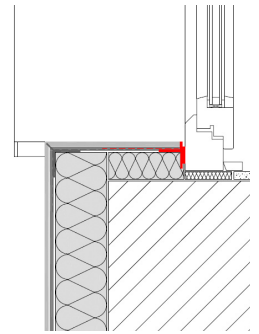
Beads & trims



Product Name: PVC Window Protection Bead
Product Code: 6436

PVC Window Protection Bead to create a seal between the ETICS System and window or door frame.

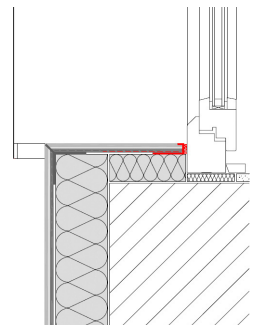
Lengths available: 2.5 m



Product Name: PVC Narrow Window Protection Bead
Product Code: 6470

PVC Window Protection Bead to create a seal against window or door frame.

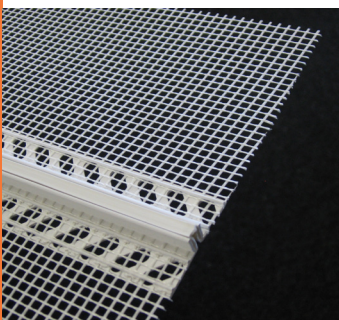
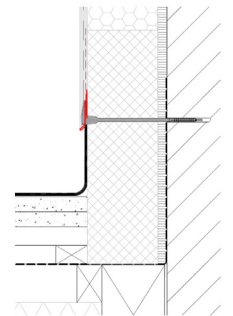
Lengths available: 2.5 m



Product Name: PVC Metal Flashing Starter Bead
Product Code: 3809

PVC Metal Flashing Starter Bead for fitting metal or lead flashing over the stepped roofs, porch roofs, bay windows, etc.

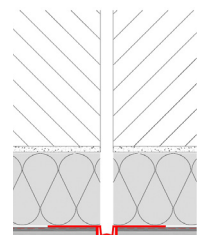
Lengths available: 2.0 m



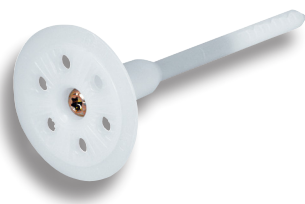
Product Name: PVC Joint Bead
Product Code: 3006

PVC Joint Bead for creating controlled render breaks.

Lengths available: 2.0 m



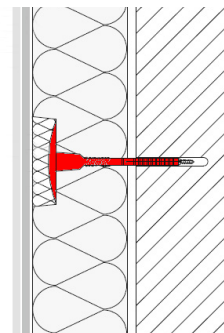
Accessories



Product Name: Mushroom fixings
Product Code: MFXXX (XXX - length in mm)

Low thermal conductivity mechanical mushroom fixings for ETICS Systems.

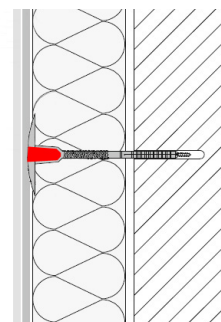
Lengths available: 100-400 mm (20mm increments)



Product Name: EPS Plugs for Mushroom Fixings
Product Code: STR-plug

EPS Plugs for covering the screw head for STR-U fixings in surface installation.

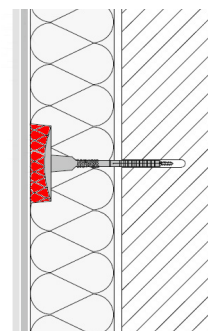
Pack size: 500 no.



Product Name: Caps for Mushroom Fixings
Product Code: STR-cap

EPS or MW Caps for covering the fixing's head for countersunk installation.

Pack size: 100 no.

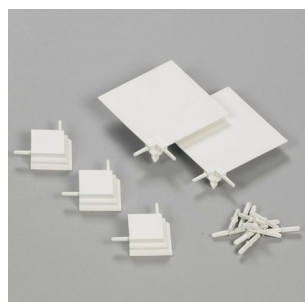


Product Name: Sealing Tape
Product Code: 3799

Sealing tape for sealing the joints to other substrates.

Lengths available: 12 m
Thickness: 15 mm
Expansion range: 3-9 mm

Different thicknesses and expansion ranges available on request



Product Name: PVC Plinth Bead Connectors Set
Product Code: 36783815

Pins and corners for easy and clean connection of PVC Plinth Bead.

Set content: 10 corners + 25 pins





Product Name: Light Weight Objects Installation Dowel
Product Code: 3699

PVC Light Weight Installation Dowel to install light objects up to 5kg per installation point.

Pack size: 10 no.



Product Name: Medium Weight Objects Installation Packer
Product Code: 3844

EPS Installation Packer for fitting medium weight objects up to 15kg per packer.

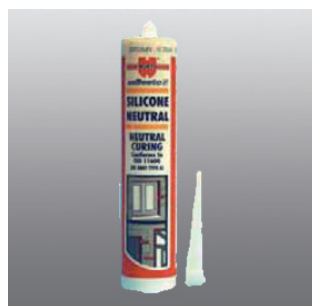
Depths available: 60-300mm (20mm increments).



Product Name: Heavy Weight Objects Installation Packer
Product Code: 3847

Composite Installation Packer for fitting heavy weight objects .

Depths available: 60-300mm (20mm increments).



Product Name: Clear Silicone
Product Code: Silicone

Solvent free Clear Silicone for sealing the joints at the window frames, flashings, etc.

Container size: 310ml

