

ETICS Sealing Tape 3799

WDVS Dichtband 3799

**pre-compressed joint sealing tape made from
impregnated polyurethane soft foam
Types 2D, FE, AN and DE**

Type 2D 3799.0015

Properties

Pre-compressed joint sealing tape made from fine-cell polyurethane soft foam with integrated two-stage seal. Fully reacted, homogeneous material, slightly hydrophobic, with side surface impregnation and adhesive on one side. Can be used independent of temperature conditions. Wide joints can be sealed with just one size. Meets the requirements of load groups BG1 as per DIN 18 542, is impact-rain proof as per DIN 18 055, hardly inflammable B1 as per DIN 4102, weather resistant as per DIN 53 387 and open to vapor diffusion. High flexibility, compensates movement caused by tension or pressure or shearing forces and provides a safe seal against draft, heat loss, noise, dust, etc.. Expands immediately after unrolling, independent of temperature.

Field of Application

For sealing joints and connections in ETICS system, e.g. at window and door frames, window sills, roof projections, etc. Particularly suitable as excellent seal in all Brillux ETICS systems at system edges, also in combination with ETICS Base Section 3770.

Material description

Color: anthracite

Basis: polyurethane soft foam material with side surface impregnation

Density: approx. 40 to 50 g/dm³

Temperature resistance: from -30 °C to +90 °C

Type 2D 3799.0015:

Nominal size: 15/3-9

Joint width: 3 to 9 mm

Joint depth: 15 mm

Packaging:

Type 2D: approx. 12.0 m/roll

Type FE 3799.0003

Type AN 3799.0005

Type DE 3799.0030

Properties

Pre-compressed, self-expanding joint sealing tape made from open-cell polyurethane soft foam, fully impregnated, with flame-inhibiting synthetic resin and adhesive on one side. Meets all requirements of load groups BG1 as per DIN 18 542, is impact-rain proof as per DIN 18 055, hardly inflammable B1 as per DIN 4102, weather resistant as per DIN 53 387 and open to vapor diffusion. The impregnation protects against weather impact, increases the sealing effect and ensures an extraordinary ageing resistance. High flexibility, compensates movement caused by tension or pressure or shearing forces and provides a safe seal against draft, heat losses, noise, dust, etc.. Expands immediately after unrolling, dependent on temperature.

Field of Application

For sealing joints and connections in ETICS system, e.g. at window and door frames, window sills, roof projections, etc. Particularly suitable as excellent seal in all Brillux ETICS systems at system edges, also in combination with ETICS Base Section 3770. Type DE, in combination with ETICS Base Section 3770, is particularly suitable for creating expansion joints in the Brillux ETICS systems due to its nominal dimensions.

Material description

Color: anthracite

Basis: impregnated polyurethane soft foam

Density: approx. 100-129 g/dm³
100-120 g/dm³

Temperature resistance:
from -30 °C to +90 °C

Type FE 3799.0003:

Nominal size: 19/3

Joint width: 2 to 5 mm

Joint depth: 19 mm

Type AN 3799.0005:

Nominal size: 19/5

Joint width: 3 to 7 mm

Joint depth: 19 mm

Type DE 3799.0030

Nominal size: 30/12

Joint width: 10 to 18 mm

Joint depth: 30 mm

Packaging:

Type FE: approx. 10.0 m/roll

Type AN: approx. 6.6 m/roll

Type DE: approx. 6.0 m/roll

Use

Surface preparation

Clean joint areas if necessary and ensure a level surface. The substrate must be solid, dry, clean, load bearing and free from any efflorescence, sintered layers and separating agents. Highly absorbent substrates must be impregnated before installation.

Installation of sealing tape

ETICS Sealing Tape 3799 is installed when the insulation panels are installed. After exact measurement of the joint, remove the leader strip from the roll. In the case of short joints cut the required length off the roll using a knife. Allow for 1 cm "expansion reserve" per meter of sealing tape. For installation, pull the sealing tape off the cover strip (not vice versa). Press the adhesive side against the joint face manually. In the case of horizontal joints, the adhesive side of the sealing tape should face down. Butt-join the ends of the tapes, ensure a continuous sealing level. In the case of vertical joints, install the sealing tape bottom up. For visual reasons, keep a distance of 1 to 2 mm from the front edge of the joint.

Installation of connection joints

The sealing tape must be fixed to the adjacent substrate flush with the surface of the insulation panel. The tape must be butt-joined and must not be led around or through corners. The insulation boards must have direct contact with the sealing tape. The reinforcing layer and the top coat must be separated from the adjacent structure by a separation cut to prevent

uncontrolled breaking in the joint area.

Installation of expansion joint

For creating an expansion joint with ETICS Sealing Tape 3799, first fix ETICS Base Section 3770 and mount the ETICS insulation panels on this side of the facade. The ETICS Sealing Tape 3799 is installed between the base sections directly before installing the opposite base section and the other ETICS insulation panels.

Application temperature

ETICS Sealing Tape 3799, Type 2D can be installed independent of the temperature. The application properties of ETICS Sealing Tape 3799 Types FE, AN and DE strongly depend on the temperature. The most favorable application and storage temperature is between +10 °C and +20 °C. In higher temperatures, the material expands very quickly. In lower temperatures, it expands very slowly. In higher temperatures, the ETICS Sealing Tape 3799 should be stored in a cool box, for example, until it is used on site.

Storage

If stored at a dry place, at +1 °C to +20 °C, the material can be stored for at least 1 year.

Notes**Correct dimensioning**

Movements of the structures and changes in length of the materials due to temperature must be added to the existing widths of the joints. Only use ETICS Sealing Tape 3799 for installations enabling a compression of the tape during the installation. Comply with the specified joint dimensions in order to ensure a proper sealing effect.

Compatibility

The sealing tape must not get in contact with solvent-containing or aggressive chemicals. Before contact with the coating materials, sealing materials and natural stone, check the compatibility of such materials. Consult the Brillux Consulting Service, if necessary.

Further specifications

Also comply with the information given in the data sheets of the other products used. For more information on the installation of the ETICS Sealing Tapes 3799, refer to the ETICS detail drawings.

Also comply with the information given in the data sheets of the other products used.

Remark

This Data Sheet was prepared taking into account the German laws, Standards, specifications and Codes of practice. All details were translated on the basis of the current German version. The contents do not form part of a legal contract. The user/purchaser is not released from the responsibility of checking that our products are suitable for the proposed use. In addition our general business conditions apply.

When a new version of this Data Sheet appears with updated information the previous version loses its validity. Version I

Brillux
Postbox 16 40
48005 Münster
Tel. +49 (0)251 7188-0
Fax +49 (0)251 7188-105
www.brillux.com
www.brillux.de
info@brillux.de

Figure 1
Correct installation of ETICS
Sealing Tape 3799 in corner
area

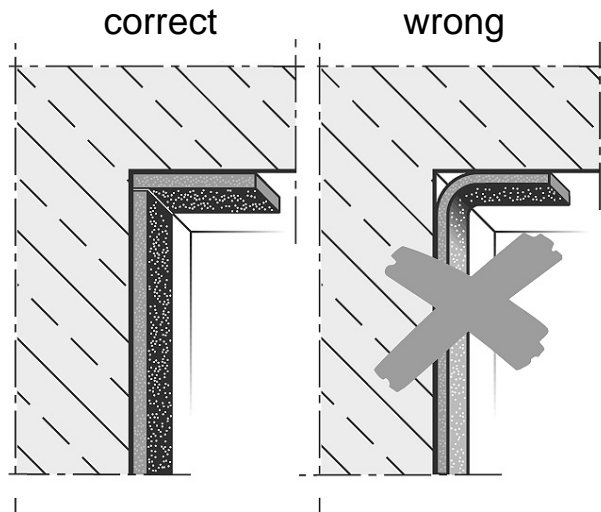


Figure 2
Reinforcement layer and top
coat must be separated from the
adjacent structure (trowel cut in
the connection joint area)

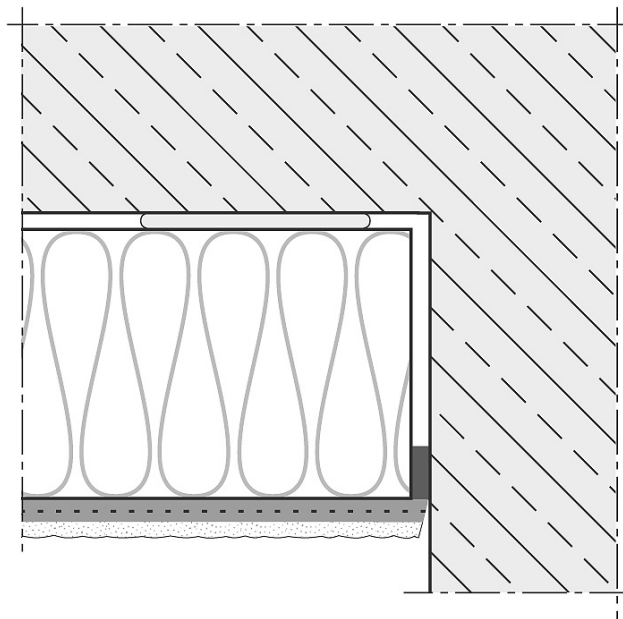


Figure 3
ETICS Sealing Tape 3799

