

ETICS Armoring Mesh 3773

WDVS Panzergewebe 3773

**reinforced glass fiber mesh for additional armoring
in Brillux ETICS systems**

Properties

ETICS Armoring Mesh 3773 is a special, push-resistant, alkali-resistant glass silk fabric. Blue, plasticizer-free, weather-resistant and cut edges. With very high tear and tensile strength. In system build-up hardly inflammable B1 or non-combustible A2 according to DIN 4102. Can be used with all reinforcement masses of the Brillux ETICS systems.

Field of Application

For additional armoring in the Brillux ETICS systems in facade areas exposed to particular strain, e.g. skirting, passages, building entries, etc.

Material description

Color of fabric: blue

Mesh width: 5.5 x 5 mm

Width: approx. 100 cm

Area weight: approx. 530 g/m²

Packaging: 25 m/roll

(approx. 25 m²/roll)

Use

Consumption

Approx. 1.00 m/m²

The individual mesh webs must be butt-joined.

Surface preparation

The reinforcing effect is obtained after sufficient curing of the insulation board glue (after 3 days, at the earliest, at +20 °C, 65 % r.m.) on clean, dry, offset-free and level insulation board surfaces as well as in perpendicular and flush corner areas. Also refer to VOB Part C, DIN 18 363, Par. 3.

Surface Reinforcement

The additional armoring using ETICS Armoring Mesh 3773 must be applied before surface reinforcement using ETICS Glass Fiber Mesh 3797. Apply the armoring mass (width corresponding to web width of armoring mesh) in an approx. 2 mm thick layer on the insulation boards, insulation boards must be fully covered. Apply the ETICS Armoring Mesh 3773 (butt-joined, not overlapping!) in the wet armoring mass, avoid bubbles and folds. Level the surface properly before applying ETICS Glass Fiber Mesh 3797, armoring mass above the armoring mesh must be removed completely.

Armoring layer stops at ETICS Starter Profile 3770

The ETICS Armoring Mesh 3773 ends flush with the drip edge of the WDVS Starter Profile 3770. The ETICS Glass Fiber Mesh 3797 is applied above the armoring mesh to the end of the starter profile.

Note

For detailed information, refer to data sheet "ETICS Glass Fiber Mesh 3797" and the data sheets of the reinforcement masses. Also comply with the information given in the system data sheets 5v01 to 5v06 as well as the data sheets of the other products used.

Additional product

- ETICS Glass Fiber Mesh 3797

Remark

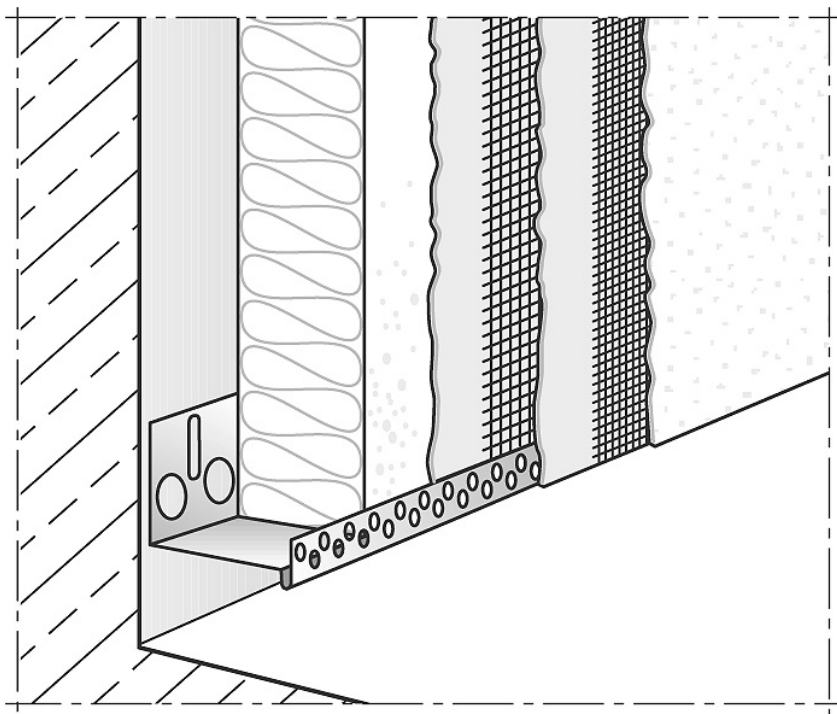
This Data Sheet was prepared taking into account the German laws, Standards, specifications and Codes of practice. All details were translated on the basis of the current German version. The contents do not form part of a legal contract. The user/purchaser is not released from the responsibility of checking that our products are suitable for the proposed use. In addition our general business conditions apply.

When a new version of this Data Sheet appears with updated information the previous version loses its validity.

Brillux
Postbox 16 40
48005 Münster
Germany
Tel. +49 (0)251 7188-0
Fax +49 (0)251 7188-105
www.brillux.com
www.brillux.de
info@brillux.de

Figure 1

Armoring with Armoring Mesh:
The ETICS Armoring Mesh 3773
ends flush with the drip edge of
the WDVS Starter Profile 3770.
The ETICS Glass Fiber Mesh
3797 is applied above the
armoring mesh to the end of the
starter profile.

**Figure 2**

ETICS Armoring Mesh 3773

