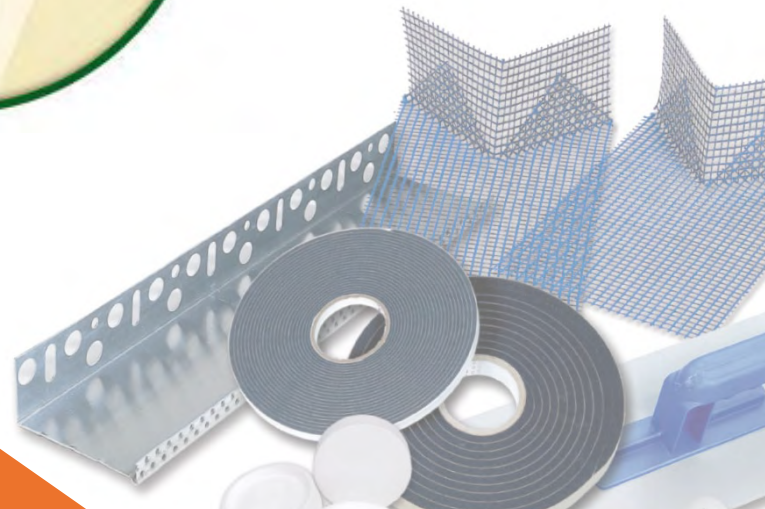


GP-121



greenspan
PRODUCTS LTD

System Components



Brillux External Insulation System



greenspan
PRODUCTS LTD

Insulation Boards3

System Components4

Finishing Coats.....5

Beads and Trim.....6

Accessories9

Insulation boards



Product Name: White Polystyrene Insulation Board
Product Code: EPS70 White

Insulation board with low inflammability, smooth edged, for wall and ceiling insulation.

Thermal conductivity (λ): 0.038 W/(mK)
Dimensions: 500 x 1000 mm
Thickness: 10-400 mm



Product Name: Platinum Polystyrene Insulation Board
Product Code: EPS70 Platinum

Special insulation board with low inflammability, smooth edged, for wall and ceiling insulation with excellent thermal features.

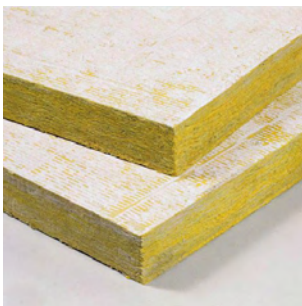
Thermal conductivity (λ): 0.031 W/(mK)
Dimensions: 500 x 1000 mm
Thickness: 10-400 mm



Product Name: Perimeter Polystyrene Insulation Board
Product Code: EPS200

Ultra high density board with lower water vapour properties to be used below the plinth areas.

Thermal conductivity (λ): 0.033 W/(mK)
Dimensions: 600 x 1200 mm
Thickness: 10-400 mm



Product Name: Mineral Wool Insulation Board
Product Code: 3522

Non combustible mineral wool insulation board for wall and ceiling insulation.

Thermal conductivity (λ): 0.035 W/(mK)
Dimensions: 625 x 800 mm
Thickness: 40, 50, 60, 80, 100, 120, 140, 160, 180, 200 [mm]



Product Name: Mineral Wool Lamella Firebrake
Product Code: 3611

Non combustible mineral wool lamella fire break board.

Thermal conductivity (λ): 0.041 W/(mK)
Dimensions: 200 x 1200 mm
Thickness: 40, 50, 60, 80, 100, 120, 140, 160, 180, 200 [mm]

System Components



Product Name: Powder Adhesive and Basecoat
Product Code: 3550

Mineral adhesive and basecoat for ETICS Systems.

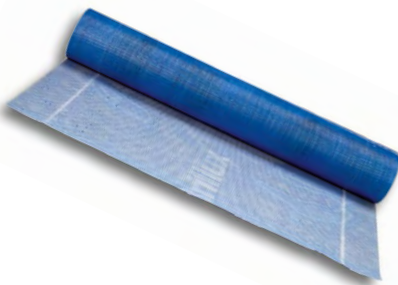
Unit size: 25kg bag
Usage: as adhesive - approx. 4-6 kg/m²
as basecoat - approx. 4.5 kg/m²



Product Name: Multiflex Adhesive and Basecoat
Product Code: 3521

Water proof adhesive and basecoat created especially for plinth and underground areas. To be mixed with Portland Cement 1:1.

Unit size: 20kg pail
Usage: as adhesive - approx. 2 kg/m²
as basecoat - approx. 1.3 kg/m²



Product Name: Glass Fibre Reinforcing Mesh
Product Code: 3797

Standard glass fibre reinforcing mesh for surface reinforcement in ETICS Systems.

Unit size: 1.1m wide x 50m long roll
Density: 165 g/m²
Coverage: approx. 50m²



Product Name: Glass Fibre Armoured Reinforcing Mesh
Product Code: 3773

High density glass fibre reinforcing mesh for surface reinforcement in ETICS Systems.

Unit size: 1m wide x 25m long roll
Density: 530 g/m²
Coverage: approx. 25m²



Product Name: Foam to Foam Filler
Product Code: 3555

Expanding foam for filling gaps and joints in the insulant.

Container size: 750ml



Finishing Coats



Product Name: Plaster Primer
Product Code: 3710

General primer to be used before render plaster application for ETICS Systems.

Unit size: 15l pail
Usage: approx. 190 ml/m²



Product Name: Mineral Light Plaster
Product Code: 3664 (KR K2), 3622 (KR K3), 3669 (KR K4), 3632 (KR K5)

Mineral plaster with a scraped surface texture for decorative weather resistant top coats. Standard grade is 2mm (KR K2).

Unit size: 25kg bag
Usage: K2 - approx. 2.5 kg/m² (Standard finish)
 K3 - approx. 2.9 kg/m² (Optional)
 K4 - approx. 3.9 kg/m² (Optional)
 K5 - approx. 4.8 kg/m² (Optional)



Product Name: Rausan Plaster
Product Code: 3523 (KR K1), 3516 (KR K2), 3517 (KR K3), 3518 (KR K4)

Ready to use organic plaster with a scraped surface texture for decorative weather resistant top coats. Standard grade is 2mm (KR K2)

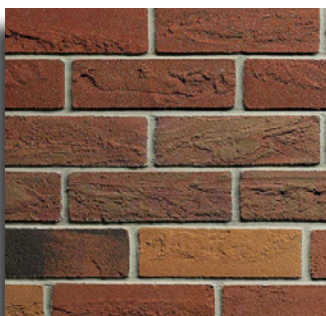
Clour: White (Precoloured with **Farbsystem**)
Unit size: 25kg pail
Usage: K1 - approx. 2.5 kg/m² (Optional)
 K2 - approx. 3.0 kg/m² (Standard finish)
 K3 - approx. 3.7 kg/m² (Optional)
 K4 - approx. 5.2 kg/m² (Optional)



Product Name: Silicate Paint Finish
Product Code: 1811

Single component, silicate based equalizing paint to be used with Mineral Light Plaster.

Clour: White (Precoloured with **Farbsystem**)
Unit size: 15l pail
Usage: approx. 180 ml/m²



Product Name: Flat Facing Brick
Product Code: Depending on colour

Flat Facing Brick for cladding ETICS to replicate brick work.

Dimensions: 71 x 240 mm
Unit size: 144 no box (3m²)

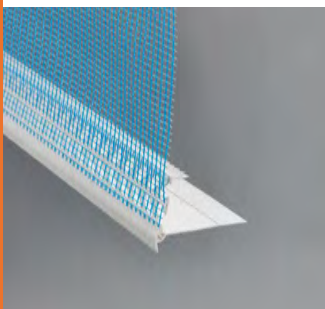
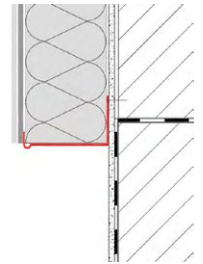
Beads & trims



Product Name: Aluminium Starter Track
Product Code: Depending on depth

Aluminium starter track for ETICS Systems.

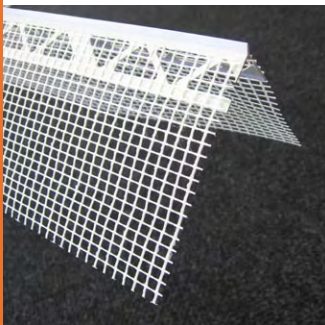
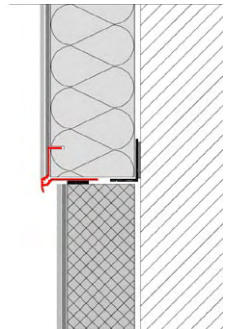
Lengths available: 2.5 m
Depths available: 30-160mm (10 mm increments)
adjustable 180-300mm



Product Name: PVC Plinth Bead
Product Code: 3815

PVC Plinth Bead to create thermal bridge free plinth detail.

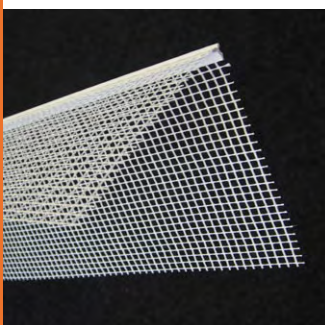
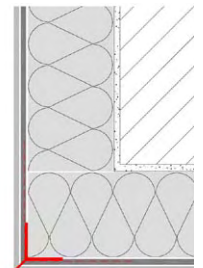
Lengths available: 2.0 m



Product Name: PVC Corner Bead
Product Code: 7020

PVC Corner Bead for finishing 90° corners.

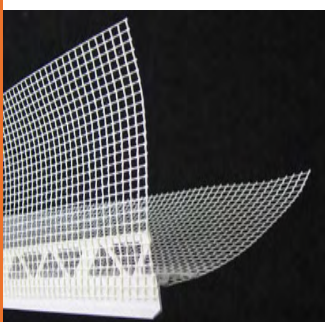
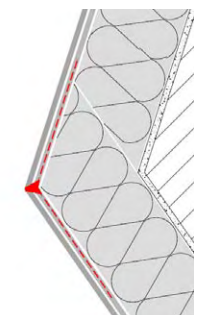
Lengths available: 2.5 m



Product Name: PVC Flexible Corner Bead
Product Code: 7120

PVC Flexible Corner Bead for finishing angled corners.

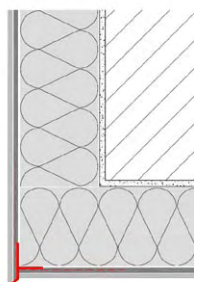
Lengths available: 2.5 m



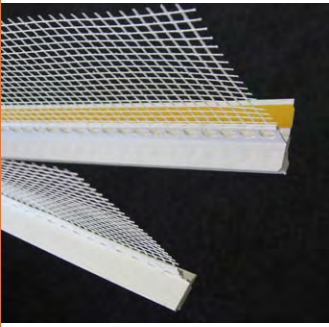
Product Name: PVC Drip Bead
Product Code: 6490

PVC Drip Bead to create a drip over window and door head reveals.

Lengths available: 2.5 m



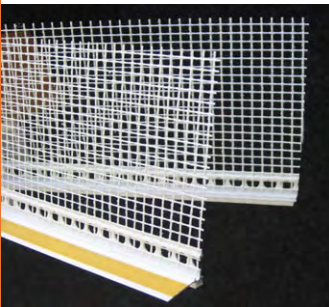
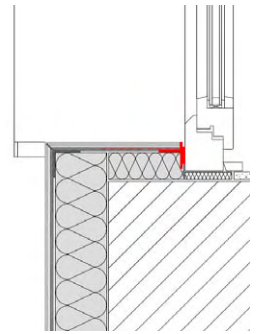
Beads & trims



Product Name: PVC Window Protection Bead
Product Code: 6436

PVC Window Protection Bead to create a seal between the ETICS System and window or door frame.

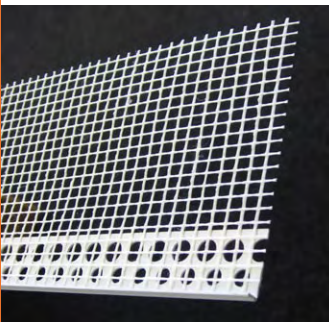
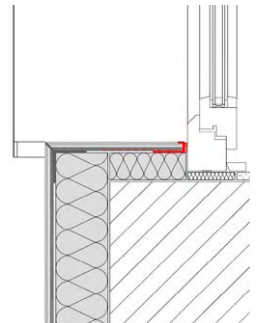
Lengths available: 2.5 m



Product Name: PVC Window Protection Bead
Product Code: 6470

PVC Window Protection Bead to create a seal against window or door frame.

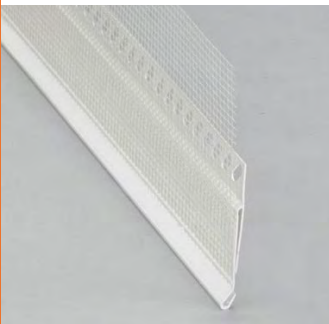
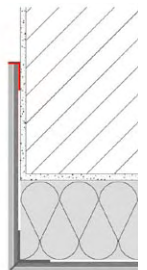
Lengths available: 2.5 m



Product Name: PVC Render Stop Bead
Product Code: 6410

PVC Render Stop Bead for a clear line render finish.

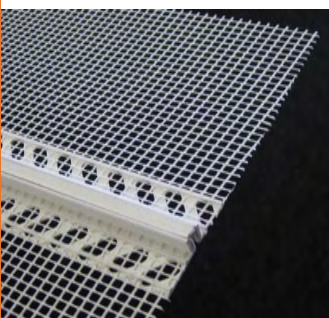
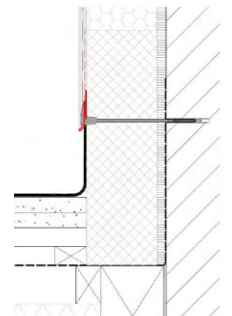
Lengths available: 2.5 m



Product Name: PVC Metal Flashing Starter Bead
Product Code: 3809

PVC Metal Flashing Starter Bead for fitting metal or lead flashing over the stepped roofs, porch roofs, bay windows, etc.

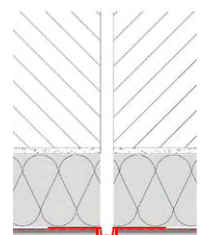
Lengths available: 2.0 m



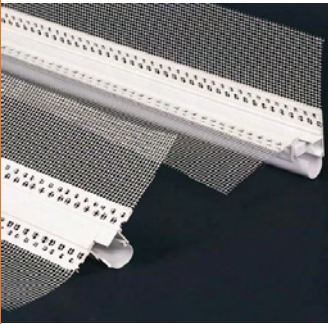
Product Name: PVC Joint Bead
Product Code: 3006

PVC Joint Bead for creating controlled render breaks.

Lengths available: 2.0 m



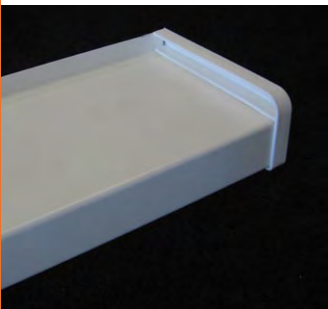
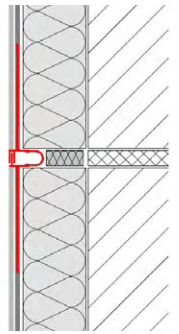
Beads & trims



Product Name: PVC Movement Joint Bead
Product Code: 3803

PVC Movement Joint Bead to accommodate structural movement joints.

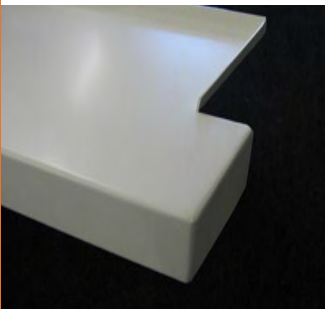
Lengths available: 2.5 m



Product Name: Aluminium Sill with End Caps
Product Code: AP-SILL+AGIT

2mm aluminium sill detailed to required depth. Powder coated to any RAL colour (standard is RAL-9010 white).

Lengths available: up to 4 m



Product Name: Aluminium Sill with Upstands
Product Code: AP-SILL

2mm aluminium sill detailed as required. Powder coated to any RAL colour (standard is RAL-9010 white).

Lengths available: up to 4 m

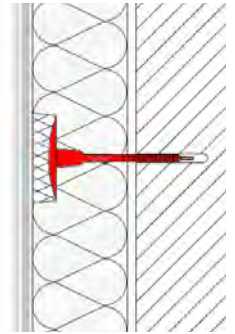
Accessories



Product Name: Mushroom fixings
Product Code: STR U XXX (XXX - length)

Low thermal conductivity mechanical mushroom fixings for ETICS Systems.

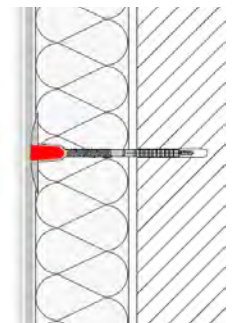
Lengths available: 115-375 mm (20mm increments)



Product Name: EPS Plugs for Mushroom Fixings
Product Code: STR-plug

EPS Plugs for covering the screw head for STR-U fixings in surface installation.

Pack size: 500 no.



Product Name: EPS Caps for Mushroom Fixings
Product Code: STR-cap

EPS Caps for covering the fixing's head for countersunk installation.

Pack size: 100 no.



Product Name: Sealing Tape
Product Code: 3799

Sealing tape for sealing the joints to other substrates.

Lengths available: 12 m
Thickness: 15 mm
Expansion range: 3-9 mm

Different thicknesses and expansion ranges available on request



Product Name: PVC Plinth Bead Connectors Set
Product Code: 36783815

Pins and corners for easy and clean connection of PVC Plinth Bead.

Set content: 10 corners + 25 pins

Accessories



Product Name: PVC Packers for Aluminium Startertrack

Product Code: 8600 725 700 (3 mm)
86011 89 710 (5 mm)
8601 232 750 (10 mm)

Packers created specially for easy alignment of Aluminium Starter Track.

Pack size: 100 no.



Product Name: Light Weight Objects Installation Dowel

Product Code: 3699

PVC Light Weight Installation Dowel to install light objects up to 5kg per installation point.

Pack size: 10 no.

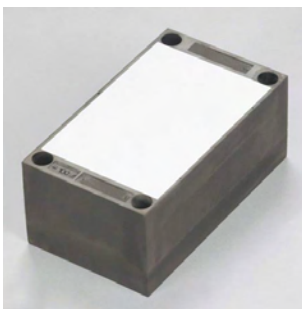


Product Name: Medium Weight Objects Installation Packer

Product Code: 3844

EPS Installation Packer for fitting medium weight objects up to 15kg per packer.

Depths available: 60-300mm (20mm increments).

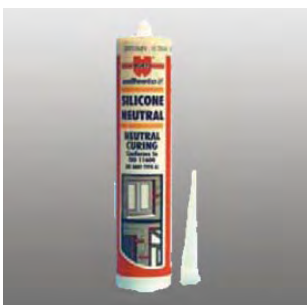


Product Name: Heavy Weight Objects Installation Packer

Product Code: 3847

Composite Installation Packer for fitting heavy weight objects .

Depths available: 60-300mm (20mm increments).



Product Name: Clear Silicone

Product Code: Silicone

Solvent free Clear Silicone for sealing the joints at the window frames, flashings, etc.

Container size: 310ml