

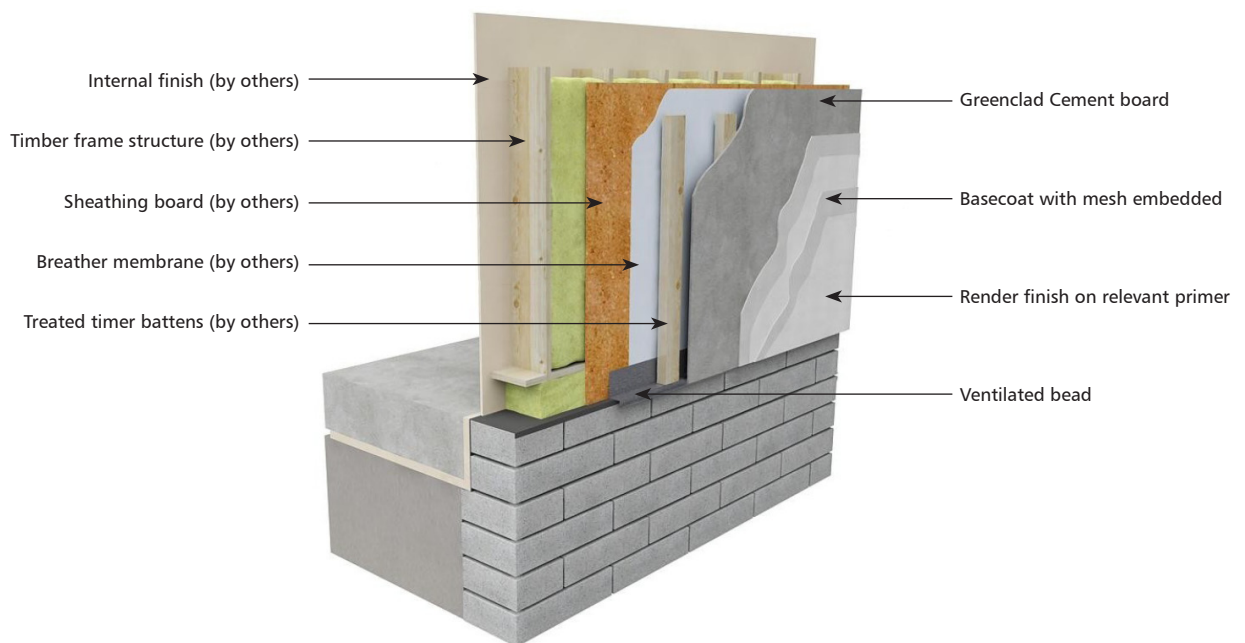


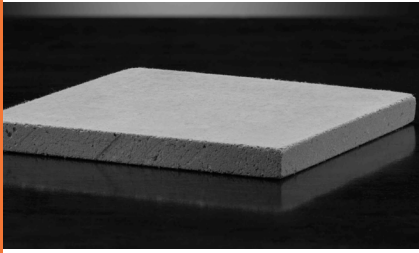
# Greenspan Greenclad™ Cement Board System Components

Main System Components.....2

Beads and Trim.....3

Accessories.....6





**Product Name:** Greenclad Cement Board  
**Product Code:**

High strength cement board to be used in external elevation systems and internal applications.

**Dimensions:** 1200 x 2400 mm  
**Thickness:** 12 mm



**Product Name:** AQUAPANEL® Stainless Steel Screws  
**Product Code:** AQ-SCREWS-SN40

AQUAPANEL® Stainless Steel Screws for fixing the board onto timber substructures.

**Q-ty per box:** 250 pieces  
**Coverage:** approx. 11 m<sup>2</sup>



**Product Name:** AQUAPANEL® Exterior Joint Tape  
**Product Code:** AQ-JOINTTAPE-50

AQUAPANEL® Exterior Joint Tape is used to reinforce joint in exterior areas. It is embedded in AQUAPANEL® Joint Filler Grey.

**Unit size:** 100mm wide x 50m long  
**Coverage:** approx. 25 m<sup>2</sup>



**Product Name:** AQUAPANEL® Joint Filler Grey  
**Product Code:** AQ-JOINTFILLER-20

AQUAPANEL® Joint Filler Grey is a cement-bound filling material for setting AQUAPANEL® Exterior Joint Tape.

**Unit Size:** 20 kg bag  
**Coverage:** approx. 35 m<sup>2</sup>



**Product Name:** GreenTherm™ Reinforcing Mesh  
**Product Code:** MAS-MESH-165

GreenTherm™ Reinforcing Mesh is a wide-meshed glass fabric designed to reinforce the basecoat exterior/interior finish systems.

**Unit Size:** 1m wide x 50m long  
**Coverage:** approx. 45 m<sup>2</sup>



**Product Name:** GreenTherm™ Fix Premium White  
**Product Code:** MAS-BASECOAT-25/W

GreenTherm™ Exterior Basecoat is used for basecoating in Cement Board Systems.

**Unit Size:** 25 kg bag  
**Coverage:** approx. 4 m<sup>2</sup> (at 5 mm thickness)



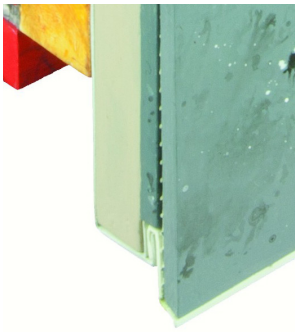
**Product Name:** GreenTherm™ Acrylic and Silicon Render 1.5mm  
**Product Code:** MAS-REND-A/25 (Acrylic); MAS-REND-S/25 (Silicone)

GreenTherm™ Acrylic or Silicone Render is used as a render finishing in Cement Board Systems. Note: Relevant primer to be applied before render application.

**Unit Size:** 25 kg pail  
**Coverage:** approx. 10 m<sup>2</sup> (1.5mm grain)



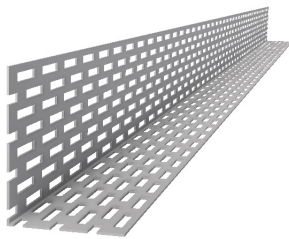
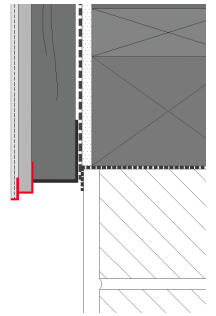
## Beads & trims



**Product Name:** Plinth profile  
**Product Code:** 6010+6011

PVC beads set with a drip to protect the bottom edge of Exterior Cement Boards

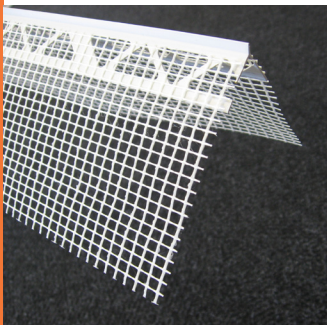
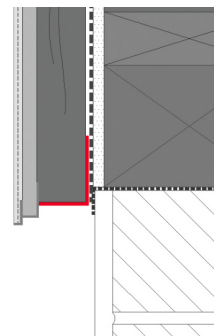
**Lengths available:** 2.0 m (6010) & 2.5 m (6011)



**Product Name:** Ventilated Angle Bead  
**Product Code:** 9301

Aluminium perforated bead used for bottom ventilation of the Exterior Cement Board Systems

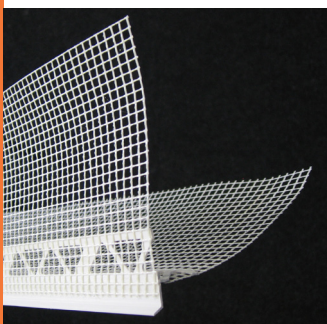
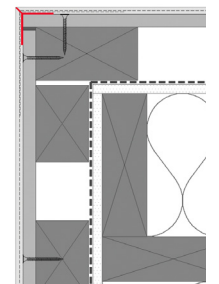
**Lengths available:** 2.0 m



**Product Name:** PVC Corner Bead  
**Product Code:** 7020

PVC Corner Bead for finishing 90° corners.

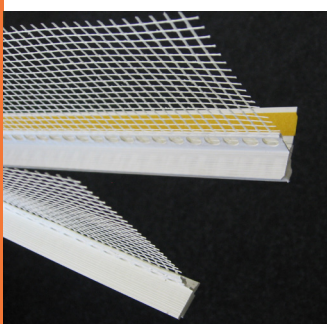
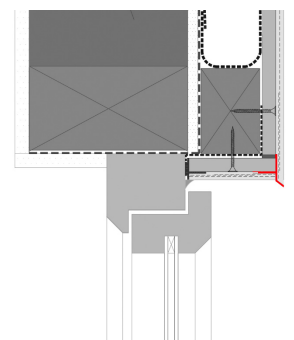
**Lengths available:** 2.5 m



**Product Name:** PVC Drip Bead  
**Product Code:** 6490

PVC Drip Bead to create a drip over window and door head reveals.

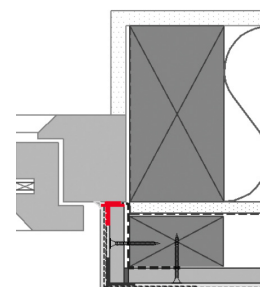
**Lengths available:** 2.5 m



**Product Name:** PVC Window Protection Bead  
**Product Code:** 6436

PVC Window Protection Bead to create a seal between the System and window or door frame.

**Lengths available:** 2.5 m



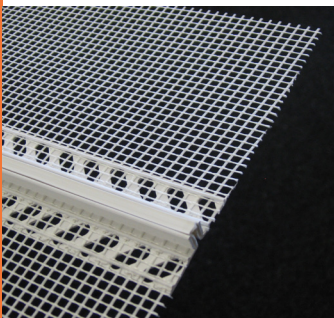
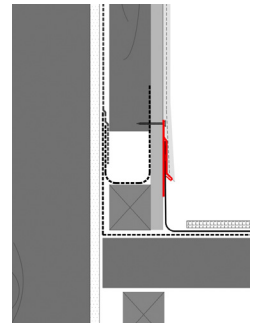
## Beads & trims



**Product Name:** PVC Flashing Starter Bead  
**Product Code:**

PVC Bead used for connection between render system and metal flashing.

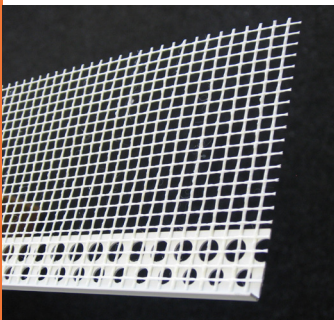
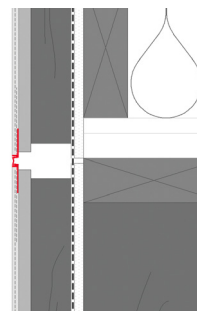
**Lengths available:** 2.0 m



**Product Name:** PVC Movement Joint Bead  
**Product Code:** 6101

PVC Movement Joint Bead to form vertical and horizontal movement joints and also controlled render breaks.

**Lengths available:** 2.0 m



**Product Name:** PVC Render Stop Bead  
**Product Code:** 6410

PVC Render Stop Bead for a clear line render finish.

**Lengths available:** 2.5 m



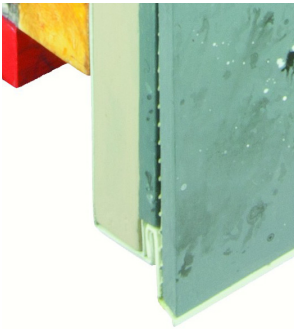
**Product Name:** PVC Horizontal Movement Joint Bead  
**Product Code:** 6010+6013+6014

PVC beads set to form a horizontal movement joint in Exterior Cement Board Systems

**Lengths available:** 2.0 m (6010), 2.5 m (6013) & 2.5m (6014)



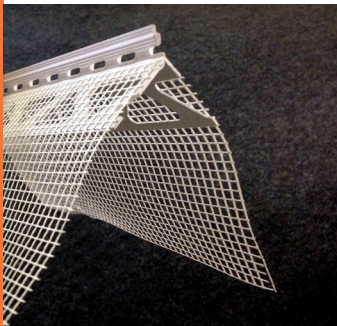
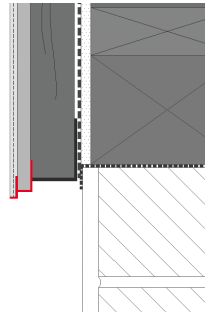
## Beads & trims for 12mm render applications



**Product Name:** Plinth profile for 12mm render  
**Product Code:** 6010+4651

PVC beads set with a drip to protect the bottom edge of Exterior Cement Boards in 12mm render applications.

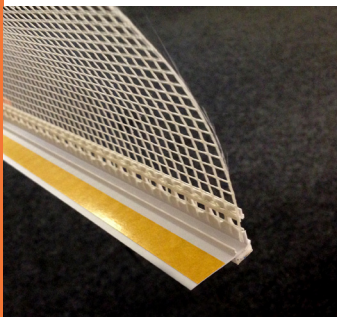
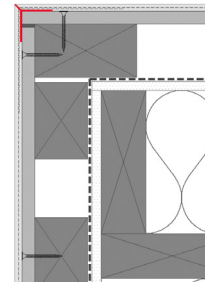
**Lengths available:** 2.0 m (6010) & 2.5 m (4651)



**Product Name:** PVC Corner Bead for 12mm render  
**Product Code:** 3304

PVC Corner Bead for finishing 90° corners in 12mm render applications.

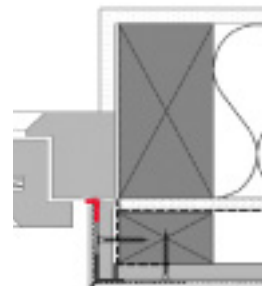
**Lengths available:** 2.5 m



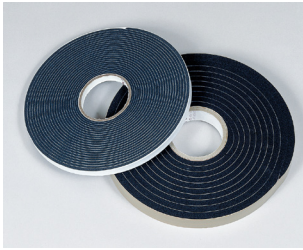
**Product Name:** PVC Window Protection Bead for 12mm render  
**Product Code:** 6460

PVC Window Protection Bead to create a seal between the System and window or door frame in 12mm render applications.

**Lengths available:** 2.5 m



# Accessories

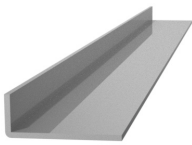
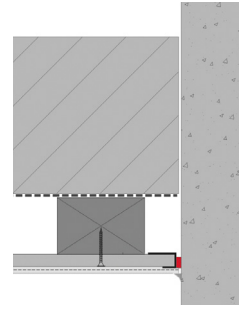


**Product Name:** Sealing Tape  
**Product Code:** 3796

Sealing tape for sealing the joints to other substrates.

**Lengths available:** 5 m / 8 m  
**Thickness:** 15 mm  
**Expansion range:** 3-9 mm

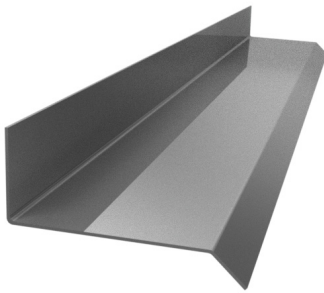
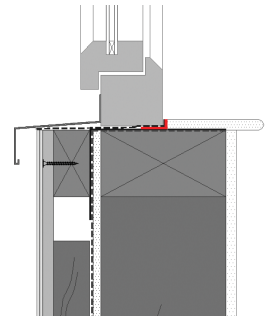
Different thicknesses and expansion ranges available on request



**Product Name:** Window Angle Bead  
**Product Code:** ALU-ALUM

Aluminium L-bead to create an upstand around the window base in Exterior Cement Board Systems.

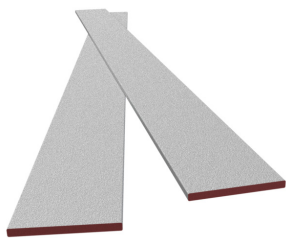
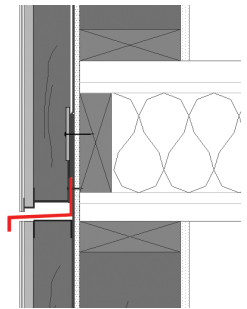
**Lengths available:** 2.4 m



**Product Name:** Stainless firestop bead  
**Product Code:** Firestop

Stainless steel bead to create a firestop detail in multi-storey constructions in Exterior Cement Board Systems.

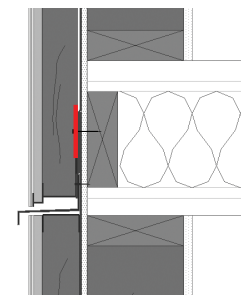
**Lengths available:** 2.5 m



**Product Name:** Intumescent Firestop  
**Product Code:** AS-ASTRO

The fire rated cladding seal will maintain the ventilated cavity in normal conditions, leaving a continuous free air space, but in the event of a fire, the intumescent ventilated fire barrier will quickly expand to seal off the cavity to prevent the spread of fire.

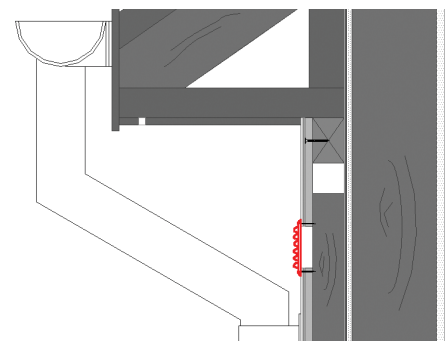
**Lengths available:** 1 m



**Product Name:** Ventilation Grid  
**Product Code:** LV25F

PVC grid to allow for system ventilation at soffit area in Exterior Cement Board Systems.

**Size available:** 155 x 95 mm

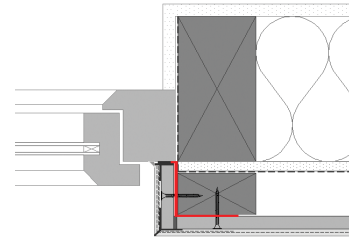




**Product Name:** Flashing Tape  
**Product Code:** SI-WYG100

The high-performance self-adhesive tape for permanent windtight sealing at window and door abutments.

**Lengths available:** 25 m  
**Width:** 100 mm



**Product Name:** Clear Silicone  
**Product Code:** ET-Silicone

Solvent free Clear Silicone for sealing the joints at the window frames, flashings, etc.

**Container size:** 310ml

